

MONTGOMERY COUNTY HEALTH DEPARTMENT: DESIGN-BUILD



Presented by Calhoun Construction Services in partnership with GRW



Calhoun Construction
Services
1708 Jaggie Fox Way
Lexington, KY 40511



GRW
801 Corporate Drive
Lexington, KY 40503

COMPANY INFORMATION: CALHOUN CONSTRUCTION SERVICES



Calhoun Construction was founded in July 2012, and is structured as an S corporation. Currently, we have ten (10) equity shareholders. Our dedicated Calhoun project leadership team has over 65 years and \$5 billion of combined construction experience. Many of our professionals have traveled the country with large nationwide construction managers building projects in excess of \$300 million. In 2024, Calhoun was recognized as one of ENR's Top 400 contractors.

Calhoun Construction Services is a Louisville-based general contractor and construction management firm with self-perform capabilities in metal stud framing & drywall, concrete, flooring, and renewable energy, allowing greater flexibility and control with budget and scheduling. Calhoun provides the vast resources of a well-established, major construction entity with the knowledge and expertise of local leadership.



\$500
MILLION
Bonding Capacity



\$275
MILLION
Annual Volume



.66
Safety EMR



2012
Year Established

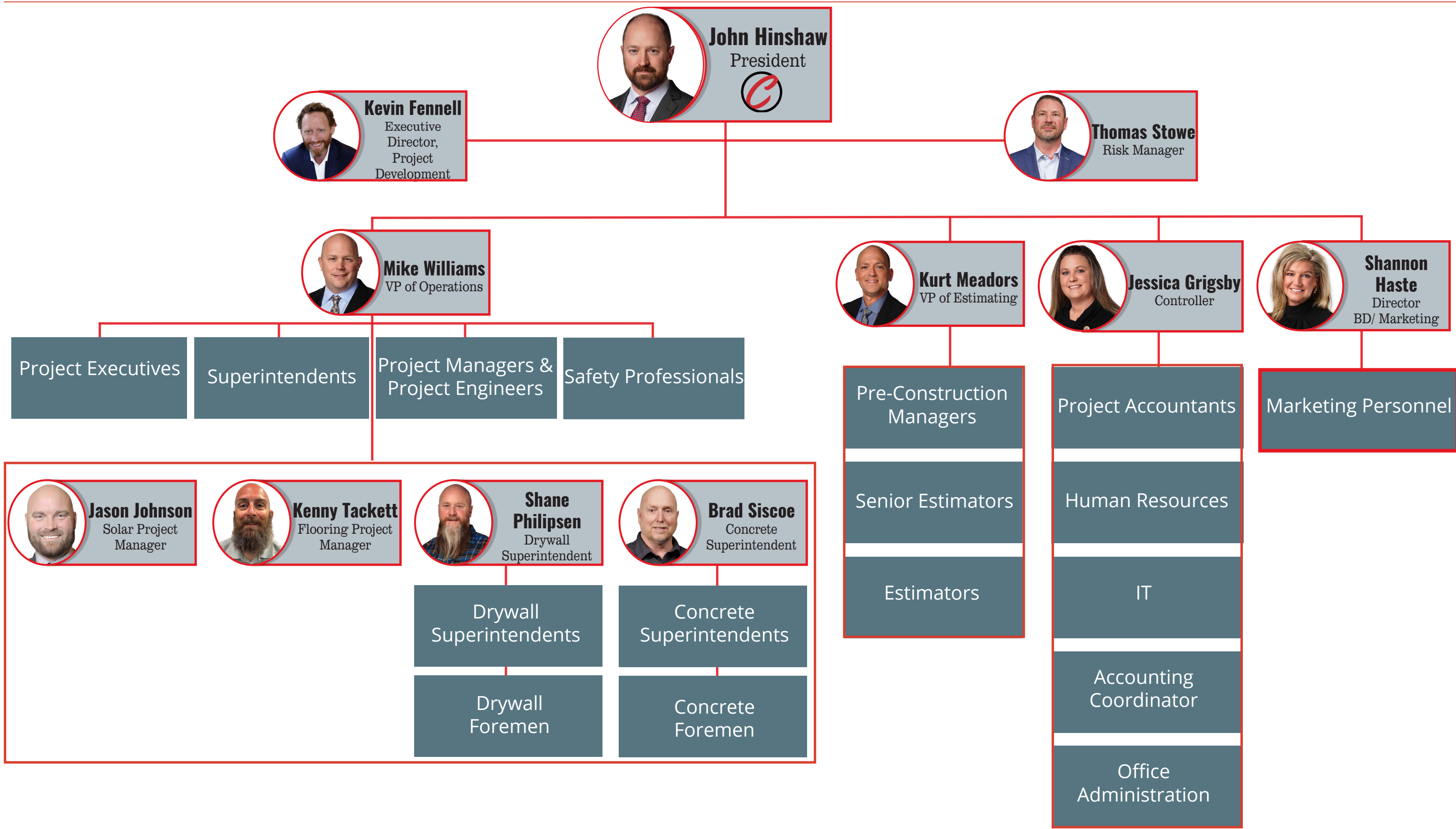


200+
Full Time
Employees

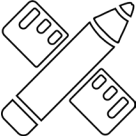


WINNER
ENR's Regional
Best Projects:
Sports &
Recreation

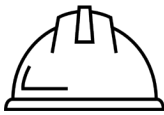
COMPANY ORGANIZATION: CALHOUN CONSTRUCTION SERVICES



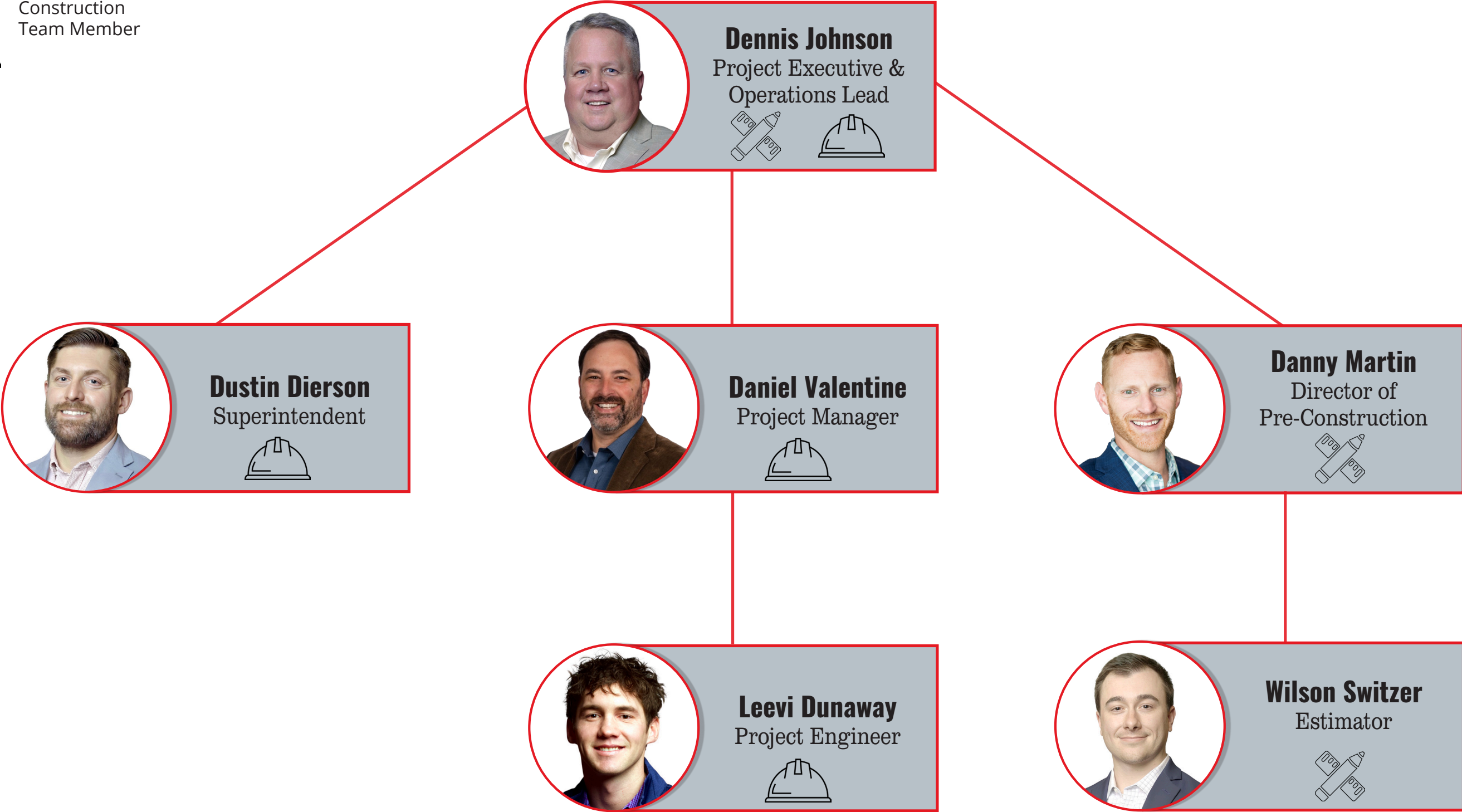
LEXINGTON OFFICE ORGANIZATION



Pre-construction
Team Member



Construction
Team Member



COMPANY INFORMATION: GRW

Founded in 1964, GRW is a Kentucky-owned, Kentucky-based multidiscipline architectural, engineering, and planning firm with more than 200 employees. More than 130 of our architects, engineers, and support personnel are located in Kentucky. You can count on our experienced, customer-focused team to deliver award-winning, highly functional projects. Recognized nationally as a top A/E design firm, Building Design and Construction's Giants 300 report ranks GRW among the nation's top firms in design and construction. GRW has also been ranked in Engineering News Record's Top 500 Design Firms in the U.S. annually since 1972.

We Know Kentucky

When it comes to navigating the ins-and-outs of working with Commonwealth of Kentucky regulatory entities, GRW will lead the way. Since our founding, a substantial portion – approximately 70% – of our work has been completed for clients in Kentucky. Our team members are well versed in the applicable codes and regulatory requirements for the projects we design across the Commonwealth.

Our Firm's Philosophy: Building a Trust Relationship

Business relationships are built on trust. By choosing GRW for your professional services, you are choosing a company that delivers on our promises. You can expect our full attention starting on day one and extending to the day of project completion and beyond. Listening diligently to your needs, and those of your community is the hallmark of our approach. Delivering projects that meet our clients' goals – honestly, reliably, and efficiently, time after time – is the reason why GRW has achieved a 90% rate of repeat business.

We're Eager to Engage with You

Listening diligently to your needs, and those of your stakeholders, is the hallmark of our approach. We pledge to deliver projects that meet your goals – honestly, reliably, and efficiently, time after time.



SPECIALIZED EXPERIENCE: BUILDING DESIGN & RENOVATION

Your GRW team includes a full-service building design studio, with architectural professionals supported by an in-house team of civil/site, electrical, mechanical, and structural engineers and technicians – as well as surveyors and geospatial professionals offering LiDAR, GIS, and aerial mapping/imagery. Our teams have led numerous facility renovations and expansions, as well as new facility construction for a variety of clients. We can complete all project phases, from concept design through construction administration.

Our In-House Services

Here's quick glance at a few of our relevant services:

Architecture

- Space Utilization Studies
- Master Plans
- Interior Design
- Life Safety
- ADA Compliance Studies
- Green Building Design
- Resident Project Representation
- Cost Estimating

Mechanical

- Fire Protection Systems
- Plumbing Systems
- HVAC Systems
- Building Energy Simulations
- Georexchange Design
- Energy Auditing

Electrical

- Communications and CATV
- Fire Alarm Systems
- Low & Medium Voltage

Power Distribution

- Access Control Systems
- Lightning Protection Systems
- Lighting (Exterior, Interior)
- Lighting Control Systems
- Solar Photovoltaics

Civil

- Site Development
- Parking
- Landscape Architecture
- Storm Drainage
- Water/Wastewater Systems

Structural

- Building Structures
- Foundations
- Equipment Isolation Pads
- Special Inspections



GRW's similar experience includes the renovation – including interior design – of 8,424 SF of space for our Louisville office.



ROLES/ RESPONSIBILITIES: DESIGN TEAM - GRW

Jimmy Piper, Jr., AIA, LEED AP BD+C – Architect of Record

- Lead the architectural design process in alignment with Owner's programming and schematic documents
- Oversee code compliance, ADA accessibility, and IECC standards across all design phases
- Coordinate cross-disciplinary integration and ensure permit-ready documentation

Jon Rollins – Architectural Intern

- Support the development of design documents and technical details
- Assist in preparing code review documentation and drawing packages
- Participate in design coordination meetings and permit preparation

Rosemary Harms – Interior Designer

- Develop interior finish palettes and casework layouts in accordance with RFP standards
- Coordinate interior signage, millwork, and furniture layout (Owner-furnished, coordinated)
- Ensure compliance with VOC tolerances and durability requirements for all interior finishes

Cory Sharrard, PE, LEED AP – Mechanical Engineer

- Design rooftop HVAC system with zoned VAVs, unit screening, and full compliance with ASHRAE 62.1 and 90.1
- Develop Building Automation System controls and mechanical specs per IMC and NFPA standards
- Coordinate mechanical system design with architecture and structure for duct routing and access

Todd Cantrell, PE – Electrical Engineer

- Provide power distribution, UPS backup, and generator integration per NEC, NFPA 70, and IECC
- Coordinate with mechanical, plumbing, and IT/security systems for comprehensive MEP integration
- Prepare lighting plans, controls, and code-required life safety systems

Steven Deaton – Electrical Engineer

- Assist with electrical system layout, panel schedules, and coordination of low-voltage systems
- Lead development of site lighting design and photometric analysis
- Ensure all systems meet OSHA, UL, and NEMA standards

Roderick Saylor, PE – Civil Engineer

- Design grading, drainage, stormwater detention, and ADA-compliant site utilities
- Oversee stormwater calculations and site compliance with geotechnical and erosion control guidelines
- Coordinate layout of sidewalks, curb/gutter, and traffic flow per local regulations

Jake Rose – Landscape Architect

- Design site plantings and green space to meet Owner expectations and RFP minimum standards
- Coordinate placement of signage, pedestrian circulation, and integration of landscape mounding with site grading
- Specify appropriate native or low-maintenance plant materials

Matt Craig, PE, SE, LEED AP – Structural Engineer

- Provide structural design of slab-on-grade, footings, steel framing, and rooftop equipment support
- Ensure all design complies with applicable structural codes and geotechnical findings
- Coordinate high-density file slab depressions and roof slope strategies with architectural and MEP teams



ROLES/ RESPONSIBILITIES: PRE-CON & CONSTRUCTION

Dennis Johnson – Project Executive

- Provide executive oversight during preconstruction and construction
- Serve as primary client liaison and contract administrator
- Ensure delivery aligns with schedule, budget, and quality expectations

Danny Martin – Director of Preconstruction

- Lead early design-phase budgeting, cost modeling, and value engineering exercises
- Coordinate preconstruction deliverables including the 50% CD cost estimate and GMP
- Work closely with design team to validate constructability and cost efficiency

Wilson Switzer – Estimator

- Develop detailed cost estimates, contingency planning, and bid packaging strategy
- Analyze site logistics and material selections for budget alignment
- Support procurement planning and material lead-time coordination

Daniel Valentine – Project Manager

- Oversee day-to-day construction management and subcontractor coordination
- Maintain communication with Owner and design team regarding schedule and progress
- Ensure contract compliance, safety, and change management during construction

Leevi Dunaway – Project Engineer

- Support RFI and submittal management, document control, and field coordination
- Track progress and assist with quality assurance and punch list closeout
- Work with Superintendent and PM on real-time issue resolution

Dustin Dierson – Superintendent

- Manage on-site construction activities, subcontractor supervision, and sequencing
- Enforce site safety plan, erosion control, and SWPPP compliance
- Lead coordination of temporary utilities, logistics, and staging



JIMMY PIPER, JR., AIA, LEED AP BD+C

GRW Architect



YEARS OF EXPERIENCE:

With GRW: 30

Total: 39

EDUCATION

Bachelor of Architecture,
1987, University of
Kentucky

REGISTRATION

Registered Architect: KY,
IN, VA, OH, MI, GA
National Council of
Architectural Registration
Boards (NCARB)
Certification
LEED Accredited
Professional BD+C

PROFESSIONAL AFFILIATIONS AND TRAINING

AIA Kentucky Code Review
Committee (2021)
Kentucky Housing,
Buildings and Construction
Advisory Committee (2016-
2017, 2017-2018)
AIA East Kentucky Chapter
Board of Directors (2017)
American Institute of
Architects (AIA)
Kentucky Masonry
Institute Certified Masonry
Specialist
Steel Window Restoration
Seminar, Kentucky
Heritage Council
AIA School Facilities
Construction A to Z
Continuing Education
Society for College and
University Planning

RELEVANT PROJECT EXPERIENCE

Clark County Health Department Feasibility Study, Winchester, KY

Principal. Examine existing Health Department facility and explore options to either perform a major remodel of the existing facility or build new on an adjacent site.

Franklin County Public Health Center Renovation, Frankfort, KY

Project Manager. Renovation of 10,462 SF building used primarily as office space for health inspectors, health educators, and home visitation staff. Includes a conference room for health education classes and community meetings. Secondary usage of building is an Emergency Operations Center.

Georgetown College Campus Masterplan, Georgetown, KY

Project Manager. Preparation of campus master plan. Scope involved completion of/ assistance with detailed inventory of campus buildings, plan for maintenance/renovation needs for each building, and identification of 1- to 3-year capital spending priorities, and 5- to 10-year objectives.

Berea College Seabury Center Renovation, Berea, KY

Project Manager. Design services to renovate two existing racquetball courts into office suites for coaches. Proposed design involved addition of flooring/ceiling system to create two-story office suite, as well as enclosure of portion of lobby with aluminum/glass wall at lower level to create reception space.

Pulaski County Schools Area Technology Center Renovation, Somerset, KY

Architect. Design for 6,000 SF renovation of approximately 38,000 SF facility. Spaces include industrial technology classroom, robotics tech lab, hydraulics tech lab, weld tech lab, electronics tech lab, and support spaces.

UK Medical Center Oral Health Research Fit-up, Lexington, KY

Project Manager. Design under an open-end contract for renovation of approximately 1,450 SF of laboratory space for conversion to 3 oral health exam rooms, reception/waiting area, staff offices, and medical storage. Included: demolition, construction documents, procurement coordination of exam equipment and vacuum system; exam room millwork, architectural finishes, existing furniture relocation, lighting, emergency electrical circuits for refrigeration equipment, HVAC, and plumbing; reference plan of hospital directing aspects of construction staging for contractor.

Indiana ARNG 76th Brigade Combat Team Readiness Center, Lawrence, IN

Project Manager. Planning, design and construction administration services for new 109,555 SF, 2-story Readiness Center and 8,300 SF unheated storage facility. Includes: administrative areas; classrooms, COMSEC training, library and training center, distance learning; assembly hall with fully functional kitchen; locker rooms, medical section room; heated unit storage and unheated storage rooms, facility maintenance, arms vault, tool rooms; RAPIDS, family support and recruiting offices; space for future indoor range or simulator; military and POV parking, wash platform, loading ramp and dock, helipad; site Antiterrorism / Force Protection (AT/FP) measures, security lighting; energy management and control system, intrusion detection system, mass notification system; stormwater bio-retention pond.

JON ROLLINS

GRW Architectural Intern



YEARS OF EXPERIENCE:

With GRW: 17

Total: 26

EDUCATION

Bachelor of Architecture,
1999, University of
Kentucky

PROFESSIONAL AFFILIATIONS AND TRAINING

LEED (Leadership in
Energy and Environmental
Design) qualified pre-
and post-construction
credit documentation for
building certification
Adaptive reuse for
Universal Design in
residential projects

RELEVANT PROJECT EXPERIENCE

Clark County Health Department Feasibility Study, Winchester, KY

Project Manager. Examine existing Health Department facility and explore options to either perform a major remodel of the existing facility or build new on an adjacent site.

Franklin County Public Health Center Renovation, Frankfort, KY

Renovation of 10,462 SF building used primarily as office space for health inspectors, health educators, and home visitation staff. Includes a conference room for health education classes and community meetings. Secondary usage of building is an Emergency Operations Center.

Lexington Federal Medical Center Electrical Study/Assessment, Lexington, KY

Architectural Designer. Study included preventative maintenance testing of medium voltage distribution equipment in six areas, as well as priority recommendations for all found deficiencies. Work included testing/inspection of medium voltage power distribution equipment located in identified areas. Ten priority repairs were identified from highest priority to lowest and conceptual level drawings defining proposed revisions/scope of work were prepared, along with estimated construction performance time and cost analysis.

Harlan Independent Schools Field House and Concessions, Harlan, KY

Architectural Designer. Preliminary design of pre-engineered, metal field house, and concession facilities at district's athletic complex, near softball field. Field house (7,200 SF) includes field maintenance storage, football storage, laundry, men's and women's staff locker rooms, batting cage, coaches' offices, weight training, fitness training, and women's and men's locker rooms. Site placement allows for future regulation running track. Concession facilities, coordinated closely with local health department regulations, include women's and men's HDCP-accessible restrooms adjacent to softball field.

West Virginia ANG 130th Airlift Wing Building 107 Renovation, Charleston, WV

Architectural Designer. Scope of work included design services (LEED Silver design criteria) for two separately funded (MILCON/SRM) sub-projects to repurpose existing unoccupied hangar into space for Aeromedical Evacuation Squadron (AES). Repairs and building repurposing included: new interior spaces within existing facility to accommodate new functions; building exterior repairs, new interior finishes; mechanical and electrical systems upgrade; fire alarm and fire protection systems repair; and site/building revisions to meet ATEP standards. New functional areas include spaces for medical simulation training, maintenance, operations, administration, storage, and other mission-related activities.

Pulaski County Schools Area Technology Center Renovation, Somerset, KY

Architectural Designer. Design for 6,000 SF renovation of approximately 38,000 SF facility. Spaces include industrial technology classroom, robotics tech lab, hydraulics tech lab, weld tech lab, electronics tech lab, and support spaces.

ROSEMARY HARMS

GRW Interior Design



YEARS OF EXPERIENCE:

With GRW: 1

Total: 4

EDUCATION

M.A., Interior Design, 2023,
University of Kentucky
B.S., Architecture, 2021,
Bowling Green State
University, OH

RELEVANT PROJECT EXPERIENCE

LFUCG - DWQ Headquarters & Operations Center Renovation/Refit, Lexington, KY

Interior Designer. Design services for the renovation of an existing building for the Lexington-Fayette Urban County Government (LFUCG) Division of Water Quality (DWQ) Headquarters and Operations Facility. The proposed site consists of approximately 67,000 square feet on approximately 8.4 acres. DWQ will have approximately 125 staff assigned to this building in a mix of administrative and operational spaces. An overall design identifying the building as part of LFUCG while staying sensitive to the neighborhood and context of the surrounding structures was imperative.

Fayette County Coroner's Office Renovations Feasibility Study, Lexington, KY

Interior Designer. Comprehensive study to determine the feasibility of renovating the County Coroner's Office existing building, constructed around 1952 contains 9,328 SF.

Winchester Fire/EMS Facility Studies & Improvements, Winchester, KY

Interior Designer. GRW will be providing a Facility Study for the City of Winchester Fire / EMS department. The Study shall include City Stations to determine deficiencies to meet the departments needs. GRW will be providing a response study to inform current coverage areas and needs. Consultants will include Palmer Engineering. The initial Scope of Work shall be a Facility Study.

Clark County Health Department Feasibility Study, Winchester, KY

Interior Designer. Examine existing Health Department facility and explore options to either perform a major remodel of the existing facility or build new on an adjacent site.

East Kentucky Power Cooperative Spurlock EOP Operations Employee Facility, Maysville, KY

Interior Designer. Addition to the existing Spurlock Power Station to house an office, break room / Kitchenette, locker room, and restroom space.

Kenton County Fiscal Court Independence Courthouse Phase 4 Renovation, Independence, KY

Interior Designer. Work includes designing new layout for public restrooms, as well as replacing lighting and ventilation. In main lobby, lighting is being replaced to match recently replaced courtroom lighting.

Berea College Hutchins Library IT Suite Renovation, Berea, KY

Interior Designer. Architectural and engineering design to renovate the 9,135 SF Hutchins Library IT Suite for use by several other groups including 2,842 SF for Student Success Transitions; 878 SF for Disability and Accessibility Services; 1,457 SF for Center for Transformative Learning; and 5,177 SF for existing occupants.

Rural Lorain County Water Authority Administrative Office Renovation, Lagrange, OH

Interior Designer. Planning, design, bidding and construction administration services for updates to the administration building.

CORY SHARRARD, PE, LEED AP

GRW Mechanical Engineer



YEARS OF EXPERIENCE:

With GRW: 6
Total: 26

EDUCATION

B.S., Industrial Technology,
1996, Murray State
University
B.S., Mechanical
Engineering, 1998,
University of Kentucky
REGISTRATION
Professional Engineer: KY,
IN, OH, WV, NY, FL, TN
NCEES Member allows
reciprocity with other
states
LEED Accredited
Professional

PROFESSIONAL AFFILIATIONS AND TRAINING

Kentucky Local
Correctional Facilities
Construction Authority
Board (through 2023)
American Society of
Heating, Refrigerating and
Air-Conditioning Engineers
(ASHRAE) - Board of
Governors, Bluegrass
Chapter
Kentucky Society of
Professional Engineers
(KSPE) - Professional
Development Committee
(Vice Chair), Bylaws &
Operational Procedures
Committee, Ethical
Practices Committee
Society of American
Military Engineers (SAME)
Society of Marketing
Professional Services
(SMPS) - Past President

RELEVANT PROJECT EXPERIENCE

Clark County Health Department Feasibility Study, Winchester, KY

Mechanical Engineer. Examine existing Health Department facility and explore options to either perform a major remodel of the existing facility or build new on an adjacent site.

Franklin County Public Health Center Renovation, Frankfort, KY

Mechanical Engineer. Renovation of 10,462 SF building used primarily as office space for health inspectors, health educators, and home visitation staff. Includes a conference room for health education classes and community meetings. Secondary usage of building is an Emergency Operations Center.

Lexington Federal Medical Center Electrical Study/Assessment, Lexington, KY

Mechanical Engineer. Study included preventative maintenance testing of medium voltage distribution equipment in six areas, as well as priority recommendations for all found deficiencies.

Fayette County Coroner's Office Renovations Feasibility Study, Lexington, KY

Mechanical Engineer. Comprehensive study to determine the feasibility of renovating the County Coroner's Office existing building, constructed around 1952 contains 9,328 SF.

Kenton County School District Transportation & District Support Facility, Fort Wright, KY

Mechanical Engineer. New approximately 80,578 SF transportation and support facility to support staff and operations for these critical district functions: transportation, maintenance, technology, and support operations.

Jeffersontown Fire & EMS Station #54, Jeffersontown, KY

Mechanical Engineer. Complete A/E design services for new 17,500 SF city Fire and EMS station. Facility consists of two-story fire house, accessory 3-bay garage building, storage building, and full site development.

East Kentucky Power Cooperative Headquarters Renovations, Winchester, KY

Mechanical Engineer. Architectural, as well as mechanical and electrical engineering design to renovate five areas -- totaling more than 20,600 SF -- at headquarters campus. Services involve reconfiguring lighting and power, as well as providing new finishes and HVAC systems.

Georgetown College Cooke Building Renovation, Georgetown, KY

Mechanical Engineer. Design-build renovation project of first floor of Cooke Building. Renovation of approximately 3,847 SF encompasses addition of walls and doors, flooring replacement, and replacing and/or adding suspended ceiling, new HVAC system, as well as new lighting, and addition of power, data, and communication outlets.

Burkesville City Hall Replacement, Burkesville, KY

Mechanical Engineer. New City Hall contains approximately 5,500 SF with City Council meeting room, offices for the Mayor and City Clerk, Utilities Office with drive-through, and police department with offices, muster room, interview area, evidence storage, breathalyzer, and sally port.

TODD CANTRELL, PE

GRW Electrical Engineer



YEARS OF EXPERIENCE:

With GRW: 18
Total: 20

EDUCATION

B.S., Electrical Engineering,
2004, University of
Kentucky
B.S., Physics, 2004,
Morehead State University

REGISTRATION

Professional Engineer,
Electrical: KY, TN, OH, MO,
NY, VA

PROFESSIONAL AFFILIATIONS AND TRAINING

American Council of
Engineering Companies
AGI32 Lighting Software
Roadway Emphasis Class
- Presented by Lighting
Analysts, Inc.

RELEVANT PROJECT EXPERIENCE

UnitedHealth Group Lexington Green Office Fit-Up, Lexington, KY

Electrical Engineer. Engineering design services for fit-up of 7,000 SF office building. Project encompassed mechanical, electrical and plumbing design services including owner-specified security system, fire alarm system update, and building restroom modifications.

Pulaski County Schools Area Technology Center Renovation, Somerset, KY

Electrical Engineer. Design for 6,000 SF renovation of approximately 38,000 SF facility. Spaces include industrial technology classroom, robotics tech lab, hydraulics tech lab, weld tech lab, electronics tech lab, and support spaces.

Pulaski County Schools Area Technology Center Welding Lab Fume Hood, Somerset, KY

Electrical Engineer. Engineering design services for canopy exhaust hood for existing 4-person welding station without exhaust in welding technology lab at area technology center.

Kentucky Department of Juvenile Justice Jefferson County Youth Detention Center Renovation, Louisville, KY

Electrical Engineer. Renovation of facility to house functions for high security youth population that is intended to provide adequate space for functions of 64-bed high-security youth detention facility, including secure housing facilities, medical services, educational spaces, recreational spaces, kitchen and dining spaces, and other necessary functions of a secure youth detention facility. Approximately 50,000 square feet of facility is affected by project scope involving basement and first two floors.

Indiana ARNG 76th Brigade Combat Team Readiness Center, Lawrence, IN

Electrical Engineer. Planning, design and construction administration services for new 109,555 SF, 2-story Readiness Center and 8,300 SF unheated storage facility. Includes: administrative areas; classrooms, COMSEC training, library and training center, distance learning; assembly hall with fully functional kitchen; locker rooms, medical section room; heated unit storage and unheated storage rooms, facility maintenance, arms vault, tool rooms; RAPIDS, family support and recruiting offices; space for future indoor range or simulator; military and POV parking, wash platform, loading ramp and dock, helipad; site Antiterrorism / Force Protection (AT/FP) measures, security lighting; energy management and control system, intrusion detection system, mass notification system; stormwater bio-retention pond.

Frankfort Plant Board Administration Building, Frankfort, KY

Electrical Engineer. New three-level, 46,000 SF administration building on 30-acre site providing consolidated facility for administrative offices (accounting, human resources, management, IT, dispatch, customer service), as well as exterior drive through tellers, board/community room and designated shelter area. Building construction includes primarily architectural precast concrete panels with design elements such as structural silicone glazing systems and aluminum panels.

STEVEN DEATON

GRW Electrical Engineer



YEARS OF EXPERIENCE:

With GRW: 4
Total: 4

EDUCATION

B.S., Electrical Engineering,
2020, University of
Kentucky
B.S., Mathematics, 2016,
University of Pikeville

RELEVANT PROJECT EXPERIENCE

Franklin County Public Health Center Renovation, Frankfort, KY

Electrical Engineer. Renovation of 10,462 SF building used primarily as office space for health inspectors, health educators, and home visitation staff. Includes a conference room for health education classes and community meetings. Secondary usage of building is an Emergency Operations Center.

Lexington Police Training Academy Feasibility Study, Lexington, KY

Electrical Designer. Architecture-led feasibility study for a building being considered for use as a police training academy. Included is a site assessment, as well as feasibility of program and constructability, and final recommendations, executive summary, and project costs/ budget.

Loretto Living Center Design-Build Third Floor Renovation, Loretto, KY

Electrical Engineer. Design-build renovation of the third floor into an independent living facility with a series of suites and studio apartments. New layouts, mechanical and plumbing systems, LED lighting, and finishes will be provided.

Morehead State University HVAC Upgrades - Breckinridge, Baird, Button & Enrollment Services Buildings, Morehead, KY

Project Engineer. Design services for HVAC upgrades in four buildings: Breckinridge Hall, Baird Music Hall, Button Auditorium and university's enrollment services building.

Burkesville City Hall Replacement, Burkesville, KY

Electrical Engineer. New City Hall contains approximately 5,500 SF with City Council meeting room, offices for the Mayor and City Clerk, Utilities Office with drive-through, and police department with offices, muster room, interview area, evidence storage, breathalyzer, and sally port.

Wayne County Schools Gymnasium Building HVAC Renovation, Monticello, KY

Electrical Designer. Mechanical, electrical, and architectural design services for an HVAC renovation that includes new rooftop equipment for the gymnasium as well as VRF systems for the remaining portions of the building including a kitchen/cafeteria and locker rooms. A new roof as well as new exterior doors and windows will further improve the building envelope for the new HVAC equipment.

Louisville MSD Bullitt County Office Study, Bullitt County, KY

Electrical Engineer. A/E services for MSD's new office building. Services include facility study to help owner with space and site planning, life safety, accessibility, and code compliance review for renovation of new 10,300 SF office space.

Administrative Office of the Courts Multiple Kentucky Courthouse Facility Assessments, Multiple Locations, KY

Electrical Engineer. Scope for each of 37 sites included on-site inspection and assessment to identify building interior and exterior deficiencies, space limitation issues, security concerns, and ADA compliance issues. Reports included findings, potential solutions, and cost estimates.

RODERICK SAYLOR, PE

GRW Civil Engineer



YEARS OF EXPERIENCE:

With GRW: 20

Total: 20

EDUCATION

B.S., Civil Engineering,
2006, University of
Kentucky

REGISTRATION

Professional Engineer: KY,
FL, IN, OH, KS, MD, NY, NE,
TN

PROFESSIONAL AFFILIATIONS AND TRAINING

KYTC Complete Streets,
Roads, and Highways
Manual Training (10/27/23)

RELEVANT PROJECT EXPERIENCE

Barbourville ARH Hospital Renovation, Barbourville, KY

Civil Engineer. Design services for renovation of approximately 5,600 square feet of existing outpatient space to provide rehabilitation space for physical therapy, occupational therapy, and speech therapy. Other design work modifies or reconfigures space for therapy gym, and registration and adjacent waiting area. Existing patient rooms were converted to three private exam rooms, two speech therapy rooms and work space, and one occupational therapy lab.

VA Medical Center, Cooper Drive Division, Data Center Upgrade, Lexington, KY

Civil Engineer. Design for upgrade of existing HVAC, electrical, and fire suppression systems for critical area in main hospital basement, which included 1600 SF main computer equipment area with dropped ceiling and raised floor. All construction occurred while hospital and data systems were fully functional.

Kenton County School District Transportation & District Support Facility, Fort Wright, KY

Civil Engineer. New approximately 80,578 SF transportation and support facility to support staff and operations for these critical district functions: transportation, maintenance, technology, and support operations. Spaces anticipated range from offices and conference rooms to a garage with eight drive-through bays, a food service area, a network operations center (NOC), specialized spaces (image room, bug rooms), and numerous other items.

Jeffersontown Fire & EMS Station #54, Jeffersontown, KY

Civil Engineer. Complete A/E design services for new 17,500 SF city Fire and EMS station. Facility consists of two-story fire house, accessory 3-bay garage building, storage building, and full site development.

Nicholasville Municipal Utilities Building Addition & Renovation, Nicholasville, KY

Civil Engineer. Addition of 1,200 SF, along with renovation of 5,600 SF building including office area space expansion, exterior envelope renovations, roof replacement, site upgrades and improvements, a full mechanical renovation, and electrical upgrades and repairs.

Parkview Manor Addition, Danville, KY

Civil Engineer. Assisted living addition of approximately 6,000 SF; includes eight bedrooms with private baths, two caretaker suites with private baths, kitchen, laundry, living room, and covered porches.

Frankfort Plant Board Administration Building, Frankfort, KY

Civil Engineer. New three-level, 46,000 SF administration building on 30-acre site providing consolidated facility for administrative offices (accounting, human resources, management, IT, dispatch, customer service), as well as exterior drive through tellers, board/community room and designated shelter area. Building construction includes primarily architectural precast concrete panels with design elements such as structural silicone glazing systems and aluminum panels.

JAKE ROSE

GRW Landscape Architect



YEARS OF EXPERIENCE:

With GRW: 4
Total: 4

EDUCATION

B.S., Landscape
Architecture, 2020,
University of Kentucky

RELEVANT PROJECT EXPERIENCE

Fayette County Coroner's Office Renovations Feasibility Study, Lexington, KY

Landscape Architect. Comprehensive study to determine the feasibility of renovating the County Coroner's Office existing building, constructed around 1952 contains 9,328 SF.

Bowling Green Municipal Utilities Water & Maintenance Crews Facility Conceptual Design, Bowling Green, KY

Landscape Architect. Architectural and engineering services for conceptual site and building design services providing BGMU with a detailed preliminary design report (PDR) to identify critical project components and allow BGMU to make informed project decisions on timing, staging, current and future uses of the property. PDR shall include the items such as existing site characteristics and challenges, conceptual site & building floor plan, potential phasing options, opinion of probable costs, permitting, etc.

Kenton County School District Transportation & District Support Facility, Fort Wright, KY

Landscape Architect. New approximately 80,578 SF transportation and support facility to support staff and operations for these critical district functions: transportation, maintenance, technology, and support operations. Spaces anticipated range from offices and conference rooms to a garage with eight drive-through bays, a food service area, a network operations center (NOC), specialized spaces (image room, bug rooms), and numerous other items.

Jeffersontown Fire & EMS Station #54, Jeffersontown, KY

CADD Designer. Complete A/E design services for new 17,500 SF city Fire and EMS station. Facility consists of two-story fire house, accessory 3-bay garage building, storage building, and full site development. Fire house has dorms, office, decontamination areas as well as a 3-bay pull through apparatus bay (storage of 7 vehicles), ICC-500 compliant tornado shelter, and building -wide natural gas generator.

Burkesville City Hall Replacement, Burkesville, KY

CADD Designer. New City Hall contains approximately 5,500 SF with City Council meeting room, offices for the Mayor and City Clerk, Utilities Office with drive-through, and police department with offices, muster room, interview area, evidence storage, breathalyzer, and sally port.

Morehead State University Jet Propulsion Lab Antenna Relocation, Morehead, KY

CADD Designer. Design services to assist with the relocation of an antenna included site plans (foundation, grading and access road), field survey, electrical and communication systems, and construction observation.

National Responder Preparedness Center Site Expansion, Greenville, KY

wCADD Designer. Project included paving, drainage, and fencing improvements at existing first responder training area, as well as new access road and driving course for expansion. Also provided building, site, stormwater and signage permitting.

MATT CRAIG, PE, SE, LEED AP

GRW Structural Engineer



YEARS OF EXPERIENCE:

With GRW: 16
Total: 34

EDUCATION

B.S., Mechanical Engineering, 1990, The Ohio State University
M.S., Engineering (Focus on Structural), 1994, Purdue University

REGISTRATION

Professional Engineer: AL, FL, GA, IN, KY, LA, MD, MI, MN, MO, MS, NC, OH, PA, SC, TN, TX, VA, WI
Licensed Structural Engineer: IL
LEED Accredited Professional

PROFESSIONAL AFFILIATIONS AND TRAINING

Structural Engineers Association of Kentucky (SEAK), Past President

RELEVANT PROJECT EXPERIENCE

Harlan Independent Schools Field House and Concessions, Harlan, KY

Structural Engineer. Preliminary design of pre-engineered, metal field house, and concession facilities at district's athletic complex, near softball field. Field house (7,200 SF) includes field maintenance storage, football storage, laundry, men's and women's staff locker rooms, batting cage, coaches' offices, weight training, fitness training, and women's and men's locker rooms. Site placement allows for future regulation running track. Concession facilities, coordinated closely with local health department regulations, include women's and men's HDCP-accessible restrooms adjacent to softball field.

West Virginia ANG 130th Airlift Wing Building 107 Renovation, Charleston, WV

Structural Engineer. Scope of work included design services (LEED Silver design criteria) for two separately funded (MILCON/SRM) sub-projects to repurpose existing unoccupied hangar into space for Aeromedical Evacuation Squadron (AES). Repairs and building repurposing included: new interior spaces within existing facility to accommodate new functions; building exterior repairs, new interior finishes; mechanical and electrical systems upgrade; fire alarm and fire protection systems repair; and site/building revisions to meet ATFP standards. New functional areas include spaces for medical simulation training, maintenance, operations, administration, storage, and other mission-related activities.

Northpoint Training Center Structural Evaluation and Recommendations for Repairs to Existing Buildings, Burgin, KY

Project Manager. Structural evaluations and repair recommendations for several existing buildings on training center campus. Examples of recommended repairs include installing brackets and push piles to bedrock to resolve vocational building foundation settlement and adding end wall bracing to limit movement and repoint masonry to fix cracks in water treatment building.

Frankfort Plant Board Administration Building, Frankfort, KY

Structural Engineer. New three-level, 46,000 SF administration building on 30-acre site providing consolidated facility for administrative offices (accounting, human resources, management, IT, dispatch, customer service), as well as exterior drive through tellers, board/community room and designated shelter area. Building construction includes primarily architectural precast concrete panels with design elements such as structural silicone glazing systems and aluminum panels.

Four Roses Office Building, Lawrenceburg, KY

Structural Engineer. Design services for approximately \$1.2 million, 9,000 SF office building design/build project. Structural frame consists of hybrid of cold-formed steel framing and traditional hot-rolled structural steel. Structure is built into hillside requiring concrete earth-retaining walls at ground level.



DENNIS JOHNSON

Project Executive



INDUSTRY YEARS OF EXPERIENCE:

19

EDUCATION & TRAINING

American Institute of Construction, Certified Professional Contractor Level 2

B.S. Construction Management, Eastern Kentucky University

M.S. Construction Management, Purdue University

OSHA 10

MILITARY RECOGNITION

Armed Forces Expeditionary Medal

National Defense Medal

Good Conduct Medal

Armed Forces Service Medal

Meritorious Mast Commendation

Letter of Appreciation (third award)

PROJECT EXPERIENCE



Franklin County Health Department, Frankfort, KY

Calhoun served as the General Contractor for the renovation of the entire health center. Included in this renovation were the demolition of existing walls, installing new layout, new lights, new HVAC, adding a new canopy and installing a new roof.

LFUCG Senior and Therapeutic Center, Lexington, KY

Calhoun is currently serving as the General Contractor for the new construction of a Senior and Therapeutic Center by the Lexington-Fayette Urban County Government. This 26,318 SF project includes a basketball court, offices, workout rooms and therapy rooms. The exterior will be ACM panels and brick. The structure will consist of structural steel, cold form joists and exposed glue lam beams.

UK CAERS Carbon Fiber, Lexington, KY

Calhoun is currently serving as the General Contractor for the new construction of a 6,200 SF, one-story assembly building on the UK CAER campus. The scope of the work includes: excavation, earthwork and site drainage. New concrete floors, structural steel framing, thermal insulation, metal wall/roof panels, HVAC systems and ductwork, electrical systems, interior and exterior lighting, dust collection system, overhead coiling door, steel and concrete bollards, fume hoods, and restoration of all landscaping.

Wellington Park Apartments Senior Living, KY

Calhoun is currently serving as the General Contractor for the new construction of the 48,250 SF Senior Living apartment complex. The building is wood construction that will be 3 stories with hardi and brick veneer. We will be providing all scopes of work including the installation of a new road off of Wellington Way.

KSU Blazer Library Renovation, Frankfort, KY

Calhoun is currently serving as the General Contractor for this renovation project. Exterior brick and concrete remediation and repair, interior restroom renovation, new flooring, upgrade HVAC and electrical will be done during this job.

Keeneland Sales Pavillion Renovation, Lexington, KY

Calhoun completed the demolition of the concrete slab, interior curb, and tile floor. Installation of new concrete decks with bar tops in viewing area was then finished. Lastly, a new counter around pavillion along with new tile flooring was added.

Scott County High School Renovation, Georgetown, KY

Calhoun furnished and installed material for new bleacher footings and piers as well as the sidewalk around the concession/fieldhouse.

University of Kentucky Nutter Fieldhouse Gymnastics, Lexington, KY

Calhoun was the General Contractor for the demolition and renovation of the gymnastics space located at Nutter Field, covering an area of 5,500 square feet. The range of upgrades included the installation of brand-new flooring, modern restroom fixtures, glass features, doors, and custom cabinetry.

Urgent Vet Lexington, Lexington, KY

Calhoun was the General Contractor for the complete fit out of the emergency vet clinic. Concrete slabs, underground plumbing, storefront windows, metal stud, drywall, painting, flooring, full MEP were performed during this renovation project.

DANNY MARTIN

Director of Pre-Construction



YEARS OF EXPERIENCE:
17

EDUCATION & TRAINING

B.S. Construction
Management,
Eastern Kentucky
University

USACE CQM

RELEVANT PROJECT EXPERIENCE

1. Pikeville Regional Medical Center (\$90m)

- Assisted in buy-out of finishes packages to facilitate a floor-by-floor fit-up of newly constructed 8-story tower & parking structure
- Managed finishes contractors through punch list, closeout & Owner turnover

2. Baptist Health Corbin - LDRP & PCU Renovation

- Phased renovation & expansion of an operating LDRP & PCU
- Conversion of twelve existing private patient rooms into eight new private PCU patient rooms
- Expansion and renovation of LDRP
- Maintain ILSM & hospital operations as to not affect patient care

3. Ephraim McDowell Regional Medical Center

- Commonwealth Cancer Center – Rx Renovation
- Lab Office Renovation
- IS Relocation
- ED Registration Renovation



DANIEL VALENTINE

Project Manager



YEARS OF EXPERIENCE:
21

EDUCATION & TRAINING
B.S. Construction
Management,
Eastern Kentucky
University

OSHA 30-Hour

RELEVANT PROJECT EXPERIENCE

LFUCG Senior and Therapeutic Center, Lexington, KY

Calhoun is currently serving as the General Contractor for the new construction of a Senior and Therapeutic Center by the Lexington-Fayette Urban County Government. This 26,318 SF project includes a basketball court, offices, workout rooms and therapy rooms. The exterior will be ACM panels and brick. The structure will consist of structural steel, cold form joists and exposed glue lam beams.

UK CAER Mineral Processing, Lexington, KY:

Calhoun is serving as the General Contractor for the 9,100 SF renovation of an existing facility on the UK CAER campus. This job consists of selective demolition, new walls, HVAC, electrical work, and new flooring and finishes.

UK CAER Carbon Fiber, Lexington, KY

Calhoun is currently serving as the General Contractor for the new construction of a 6,200 SF, one-story assembly building on the UK CAER campus. The scope of the work includes: excavation, earthwork and site drainage. New concrete floors, structural steel framing, thermal insulation, metal wall/roof panels, HVAC systems and ductwork, electrical systems, interior and exterior lighting, dust collection system, overhead coiling door, steel and concrete bollards, fume hoods, and restoration of all landscaping.

UK St. Claire Morehead Cancer Center CT Simulator, Lexington, KY

Calhoun is serving as the Construction Manager for the renovation of the Morehead Cancer Center CT Simulator. This project consists of new walls, flooring, casework, ceilings, electrical, plumbing and HVAC renovations.

UK Chandler Hospital PAV-H Patient Transport Room, Lexington, KY

This project involved the renovation of the existing patient transport offices/bed storage area on the ground floor of Chandler Hospital PAV-H. The scope of the work included demolition of existing walls, doors, flooring, ceilings, and fixed equipment/accessories, construction of new walls, doors, VCT flooring, lay-in acoustical ceilings, reconfiguration of HVAC units and ductwork, and electrical.

UK Chandler Hospital PAV-H Resident Suite, Lexington, KY

This project involved the renovation of the existing resident suite on the 2nd floor of Chandler Hospital PAV-H. The scope of the work included replacement of existing flooring, acoustical ceiling panels, adding badge readers to entry doors, light fixture replacement, and repainting rooms.

WILSON SWITZER

Estimator



YEARS OF EXPERIENCE:

3

EDUCATION & TRAINING

B.S. Construction
Management,
B.S. Civil Engineering,
Morehead State University

OSHA 30-Hour

RELEVANT PROJECT EXPERIENCE

LFUCG Senior and Therapeutic Center, Lexington, KY

Estimator
Value: \$14,587,000
Duration: 18 months

UK CAER Carbon Fiber, Lexington, KY

Estimator
Value: \$3,300,000
Duration: 12 months

BCTC Administration Building Renovation & Addition, Lexington, KY

Estimator
Value: \$12,627,000
Duration: 18 months

Starbucks, Lexington, KY

Estimator & Project Manager
Value: \$1,850,000
Duration: 6 months

Georgetown Fedex, Georgetown, KY

Assistant Project Manager
Size: 500,000 sq ft
Value: \$36,000,000
Duration: 15 months

Ethington Shops, Lexington, KY

Estimator & Project Manager
Value: \$1,700,000
Duration: 12 months

LEEVI DUNAWAY

Project Engineer



YEARS OF EXPERIENCE:

1

EDUCATION

B.S. University Studies,
Morehead State University

RELEVANT PROJECT EXPERIENCE

BCTC Newtown Admin Building Renovation, Lexington, KY

Calhoun is renovating an existing 100+ year old former Eastern State Mental hospital administration building. This is also including an expansion with the new administration building being tied into the existing building. Leevi oversees the daily logs on Procore, safety orientations for new members, takes care of daily safety permits, and creates our weekly subcontractor meeting notes to learn and keep himself and the team up to date and involved in that process.

Leevi has also worked on other jobsites, familiarizing himself with the nuances at each one, including the Kentucky Horse Park, LFUCG New Senior Center, and LG&E.

DUSTIN DIERSON

Superintendent



YEARS OF EXPERIENCE:
18

EDUCATION & TRAINING

B.S. Sport Administration,
A.S. Communication,
University of Louisville

AHA Certified Healthcare
Constructor (2017)

KSHE 2020

KYHC

OSHA 30-Hour (2022)

US Army Corp of Engineers
CQM Certification (2016)

Scaffolding Training

First Aid Certified

CPR Certified

AED Certified

RELEVANT PROJECT EXPERIENCE

Bullitt County Public Schools Baseball & Softball Field Improvements, Shepherdsville, KY:

Improvements to the Baseball and Softball fields at Bullitt Central, North Bullitt, and Bullitt East High Schools. New buildings include restroom and concession buildings, new dugouts and masonry backstops. Scope includes lighting & electrical and communications. New tennis courts are planned at Bullitt Central and North Bullitt sites. Sitework includes earthwork, new paving and storm drainage. Calhoun served as the General Contractor for this new construction project, self-performing concrete.

Churchill Downs Paddock Experience Renovation, Louisville, KY

Dustin served as the MEP Superintendent for the \$200 million, 78,000 square foot project at Churchill Downs. This project transformed the pre-existing Paddock area in a manner that enhanced the experience for nearly every guest who enters the gates of the historic racetrack. The bold new design enhances visibility of the iconic Twin Spires, streamlines guest circulation paths, updated the audio visual experience and creates additional value for guests by updating existing ticket products and amenities.

Private and Government Healthcare Experience

Dustin has led a wide range of mission-critical projects across multiple VA Medical Centers, and private hospitals with complex construction within active, occupied healthcare environments. His portfolio includes the construction and relocation of the Robley Rex VAMC Substance Abuse Center, the development of several Green Homes (assisted living), and the renovation of the Medstar Georgetown Cancer Institute with addition of new ZAP radiosurgery suite. Aside from ground up projects he's completed numerous renovations and equipment replacements in the areas of Radiation Oncology, NucMed, Surgery, and all modalities of diagnostic imaging.

Multiple Pharmacy Renovations (Mary & Elizabeth, Jewish Hospital, Owensboro Health), Louisville, KY

Calhoun served (and is still serving) as the construction manager on several renovation projects of the existing hospital pharmacies' compounding clean room. The renovations were necessary to comply with the new USP 797/800 standards. Some locations received new robot compounding equipment. All work was self-performed. Overall, Calhoun has completed over 60 pharmacy projects totaling over \$5 Million.

EXPERIENCE WITH SIMILAR PROJECTS



The following pages include ten (10) examples of GRW's experience with projects with features and requirements similar to the new Health Department Facility. The examples include the following:

- Client References & Contact Information
- Past Record & Performance Data

Public Health Center Renovation Franklin County Health Department | Frankfort, KY

GRW provided A/E services for the Franklin County Health Departments Public Health Center Office renovation. The existing 11,833sf facility originally constructed as an Insurance Office in 1993 had an open office design filled with cubicles and large swaths of exposed space that did not meet the Public Health Centers needs on many levels; main entrance with waiting area, separation between public and private spaces, private HIPAA compliant offices, teaching kitchen, updated restrooms, conference and meeting areas were all nonexistent.

The programming/schematic design phase of this project included an overall evaluation of all existing spaces and reorganization separating public and private spaces via electronic-controlled access for employees as well as allowing for an improved workflow not only grouping departments together but adjacent to other departments in which they interact with most. The efficiency of the final design was capable enough to accommodate a portion of the workforce staff previously located in an off-site location. The renovation consists of a new main entrance, a reception/waiting area, private offices, group office area, teaching kitchen, small conference rooms, large conference room, storage, new restrooms, and mechanical, electrical and plumbing support spaces.

All new LED lighting and high efficiency heat pumps were utilized to minimize energy consumption and low-flow plumbing fixtures to minimize water use. The domestic hot water system was modified for the entire building to better control water temperatures throughout. The existing sprinkler system was reconfigured to the accommodate the new space layout.

During the renovation process, the owners enjoyed the new interior look so much that they began to expand to the exterior deciding to paint the brick, trim and eaves in a more modern black and white color scheme as well as adding a 6'x9' LED digital pole mounted sign with their logo on top.

Design Completion: 02/26/2024

Construction Completion: 10/15/2024

CLIENT CONTACT: Judy Mattingly, Public Health Director, Franklin County Health Department, (502) 564-4269 x125, judya.mattingly@ky.gov



Clark County Health Department Feasibility Study

Clark County Health Department | Winchester, KY

GRW was approached by the Clark County Health Department upon recommendation by the Franklin County Health Department whom GRW was underway with a renovation of their existing Public Health Center.

The Clark County Health Department wished to evaluate their existing facilities to determine current and future needs that when addressed would provide a home base for many years to come. Their primary facility was believed to be nearing 50 years old and plagued by architectural, structural, electrical and HVAC issues, making some areas of the building useless even after additions and renovation work was performed over the years. Staff found the current layout of the facility was not conducive to operational flow and did not adequately house the entire staff, which were scattered over three locations in the city of Winchester:

- 400 Professional Ave - staff for Administration, Clinic Exam and Lab, Harm Reduction, APRN, HANDS
- 273 Shoppers Drive - staff for Environmental, Population Health and Health Education services.
- 37 S. Main Street – staff for Recovery Services and Overdose Follow-Up.

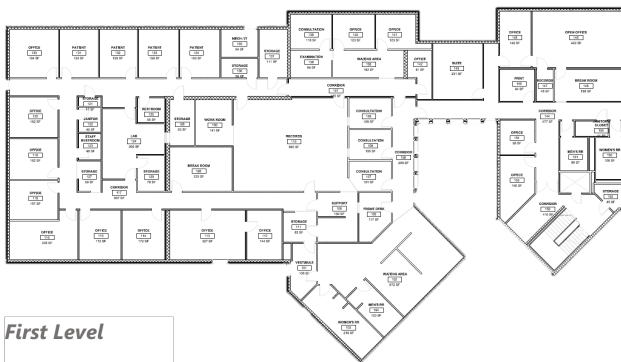
The task specific scope would include a Facility Needs Assessment for each facility and ways to incorporate the three into one campus at or near their main campus location. This report included the following:

- Evaluation of the current facility architecturally and structurally along with its mechanical, electrical and plumbing systems
- Survey provided to staff to determine; staff and department needs, space and area needs, department adjacencies, and current / future growth projections
- Develop a quality and desirable aesthetic for the facility
- Provide budgetary estimates for all three renovation / addition / new facility construction options

These tasks were developed quickly and efficiently through meetings with the Clark Co. Health Department staff, site visits including a full 3D scan of their existing facility, and GRW experience. The deliverable included a facility summary, area program, and budgetary estimates.

Design Completion: 08/29/2024

CLIENT CONTACT: Rebecca (Becky) Kissick, Public Health Director, Clark County Health Department, (859) 744-4482, Rebecca.Kissick@cchdky.org



NKADD Office Addition

Northern Kentucky Area Development District | Florence, KY

GRW provided complete A/E services for the Northern Kentucky Area Development District office addition. The existing 13,524 SF facility, located in Florence, was designed to accommodate approximately 52 people; however, the occupant load was 75 employees.

The programming/schematic design phase of this project included an overall evaluation of the existing spaces and reorganization to allow for an improved workflow. The final design plans will provided an approximate 4,500 SF addition at the rear of the existing facility, and increased the overall facility capacity to accommodate 85 persons.

The addition consists of new private offices, office cubicle area, support spaces, and break room. The new addition also accommodates the District's workforce development staff, previously located in leased off-site space. Accommodations for this staff required a separate exterior entrance, private work spaces for six employees, a computer/printer area for client use, a private one-on-one consultation room, restrooms, and an electronic-controlled access for employees to the main facility.

The addition's interior finishes are similar to those in the existing facility to create a fluid transition between

the two areas. New doors and hardware match the existing key-fob security access system.

High efficiency heat pumps were utilized to minimize energy consumption and low-flow plumbing fixtures to minimize water use. The domestic hot water system was modified for the entire building to better control water temperatures throughout. The existing wet pipe sprinkler system was also expanded into the addition.

During the construction of the office addition interior program, a Phase 2 project was developed to remediate the parking lot surface and sub-surface drainage issues. Work under the Phase 2 project – which coincided with Phase 1 – reconstruction of the asphalt parking lot included the demolition of the existing asphalt pavement, treatment of the unsuitable soils subgrade, pavement base preparation, installation of geotextile fabric, asphalt pavement, concrete curb construction, and pavement striping.

Design Completion: 07/18/2014

Construction Completion: 10/13/2015

Construction Cost Estimate: \$1,050,644

Final Construction Cost: \$1,064,007

CLIENT CONTACT: Lisa Cooper, Executive Director, Northern Kentucky Area Development District, (859) 283-1855, lisa.cooper@nkadd.org



Frankfort Plant Board Administration Building

Frankfort Plant Board | Frankfort, KY

The Frankfort Plant Board, a municipal utility company that provides cable, broadband, telephone, security, electric and water for the city of Frankfort, KY, and surrounding areas, hired GRW to provide programming, planning and design services for its new consolidated administration building and associated 30-acre site.

The new three-level, 46,000 SF administration building project consolidates the Frankfort Plant Board's administrative offices for accounting, human resources, management, IT, and dispatch. In addition, facilities were provided for the Plant Board's public customer service functions including cashier/payment service stations, exterior drive through tellers, product service representation, and board / community / training room. **The facility includes backup utility systems and a designated area designed to EOC standards.**

The Facility was designed with security and public safety factors including access control systems, CCTV, bullet-resistant assemblies / glazing. The design was to be operational prior-during-after natural disaster events, utilizing a hardened structural design. The area provided contains dispatch, emergency displays, break-out conference rooms, restrooms, and dedicated mechanical and dual power redundancy.

Design Completion: 01/01/2015

Construction Completion: 01/31/2017

Construction Cost Estimate: \$14,800,000

Final Construction Cost: \$15,652,928.9

(Change orders result of found conditions (unsuitable soil), and owner requested items)

CLIENT CONTACT: Sharmista Dutta, PE, Project Manager, Frankfort Plant Board, (502) 352-4407, sdutta@fewpb.com



Municipal Utilities Building Renovation

City of Nicholasville | Nicholasville, KY

GRW provided full A/E services for the renovation of the 5,600 SF building that houses the City of Nicholasville Municipal Utilities. To improve accommodations for both the staff and public, the project included:

- Reorganization of the building's lobby and customer service functions
- Four new customer service stations which include casework, storage, electronics, privacy shutters and security accommodations on the staff side and a check writing surface on the public side
- Accessibility upgrades including a fully ADA accessible customer service station (one of four mentioned above)
- Upgrades to material finishes (new LVT and carpet tile flooring, painted walls and ceilings, etc.)
- New exterior building access
- New lobby lighting, power and data/communications
- Larger doors, hardware, and automatic operators configurations

Design Completion: 02/28/2016

Construction Completion: 09/01/2016

Construction Cost Estimate: \$159,000

Final Construction Cost: \$161,745

CLIENT CONTACT: Bob Amato, PE, Public Utilities Director, City of Nicholasville, (859) 885-1121, bob.amato@nicholasville.org



City Hall Renovation

City of Munfordville | Munfordville, KY

This project includes the renovation of the existing historic City Hall located on Main Street in downtown Munfordville, KY. The 8,920 SF building was severely damaged by a tornado. The program included a new floor plan layout within the existing perimeter, as well as ADA accessibility compliance

Spaces in the facility include:

- Mayor's office
- City Council chambers
- City Clerk's office
- Police Department
- Water /Sewer Department offices and garage area
- Public lobby
- Service counter for bill payment

Headend Telecommunications Facility Frankfort Plant Board | Frankfort, KY

For the Frankfort Plant Board, GRW provided programming, planning, design, and construction administration services for a new 6,725 SF telecommunications headend building. The telecommunications portion of the facility has been designed to receive signals for the processing and distribution of the FPB's cable, internet, and telephone telecommunications systems to the City of Frankfort and surrounding community. The administrative area of the facility includes dedicated offices, shared workstations, conference/break room, and associated accessory spaces.

The new headend building was **designed to accommodate forces from natural disasters**, such as earthquakes and tornadoes, while maintaining crucial services to this state capital city. The design required a **hardened structure**, including cast concrete, reinforced walls and roof assemblies for the telecommunications area. Utility services for the building have been provided with mechanical and electrical system redundancy, including a backup generator, UPS and DC plant to maintain the facilities operations during an emergency event. Security features such as access control and CCTV systems were used.

Design Completion: 10/31/2014

Construction Completion: 7/01/2016

Const. Cost Estimate: \$4,364,435

Final Construction Cost: \$5,262,889

CLIENT CONTACT: Adam Hellard, Security / Broadband Technology Manager, Frankfort Plant Board, (502) 352-4325
ahellard@fewpb.com



Seabury Center Renovation

Berea College | Berea, KY

The Seabury Center houses several athletic, recreational, and wellness venues, as well as the Health and Human Performance and Athletics Departments. Renovated in 1995, a second floor gymnasium serves as a recreation and academic space for the Health and Human Performance program. In addition, the Center currently includes a cardio room, weight room, indoor track, a natatorium, and five racquetball courts.

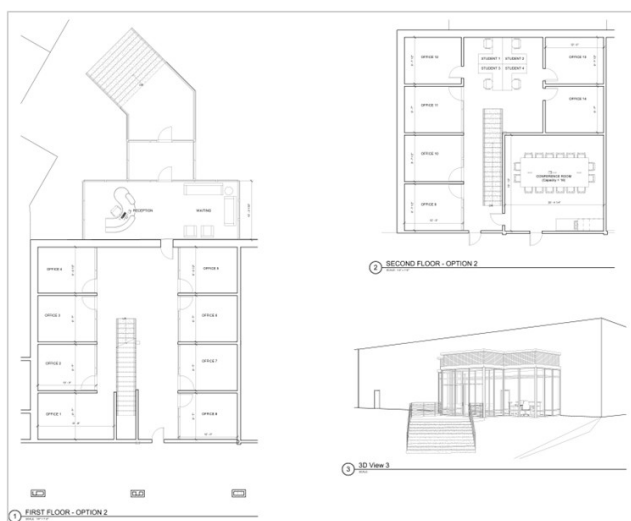
For this project, GRW is providing design services to renovate two existing racquetball courts into office suites for coaches and create a separate entry for the Berea Athletics Department. The proposed design involves the addition of a flooring/ceiling system to create a two-story office suite. Also, a portion of the lobby will be enclosed with an aluminum/glass wall at the lower level to create a reception space.

GRW has completed the modeling of the existing racquetball courts, along with options for interior and exterior entries to the Athletics Department. Work included field measurements, code review, preliminary design options, cost estimates, and interior and exterior renderings to help staff make an informed decision.

Design Completion: 3/12/2020

Construction Cost Estimate: \$700,000

CLIENT CONTACT: Jeffery Blair, Small Projects Coordinator, Berea College, (859) 985-3865
jeffery_blair@berea.edu



Office and Warehouse Buildings

Corbin City Utilities Commission | Corbin, KY

GRW provided design and construction administration services for the renovation of an existing automobile dealership into a new office, maintenance garage, and storage facility for City Utilities Commission of Corbin, KY. The project included site grading, site drainage, exterior finishes, interior finishes, and the complete demolition of the existing mechanical and electrical systems.

Situated at the front of the site and the primary project focus, the 30,500 SF Building One provides 12,320 SF of office space and 18,180 SF for maintenance and storage. The new office space contains a spacious public lobby, a cashier's counter for walk-in customers, general offices, administrative offices, shower and locker room facilities, and a warehouse for company service vehicles. The exterior work included re-grading the site and removing areas of the existing asphalt paving to control site drainage and run-off. Secure parking is provided for employees, as well as two drive-thru bays for customer convenience.

The following energy efficient items were incorporated into the renovation project: hydronic geothermal system, direct digital control (DDC) system, high-efficiency plumbing fixtures, and high-efficiency lighting and lighting controls.

Design Completion: 12/31/2009

Construction Completion: 12/20/2010

Construction Cost Estimate: \$2,810,610

Final Construction Cost: \$2,540,973

"The geothermal applications have made a huge difference in cutting our energy costs. The board's vision was not only to make it a comfortable, inviting and professional environment for our customers, but also for our valued employees. It's a win-win for the community!" - Ron Herd, General Manager, City Utilities Commission

CLIENT CONTACT: Ron Herd, PE, General Manager, Corbin City Utilities Commission
(606) 528-4026 Ext.100, ron.herd@corbinutilities.com



Monroe County Health Department Expansion Tompkinsville, KY

The existing 2,300 SF Monroe County Health Department facility was severely undersized and in need of additional space to properly accommodate county residents. Available construction funds allowed for a new, one-story, 2,850 SF brick masonry veneer addition to be constructed adjacent to the existing facility. The addition created a new main entrance into the facility with a larger lobby containing seating for 18 patients. The lobby's flexible seating and proportions allow the space to double as an educational space.

Components include a reception desk; two medical registration stations with easily accessible medical records storage; four new clinical exam rooms, including one designed and designated as a negative pressure exam room with direct access from the exterior; a new conference / education room equipped with off-site audio / video conferencing capabilities; lobby restroom; patient restroom; support spaces; and a laboratory with adjacent medical supply storage. The addition was designed to comply with the current ADA and HIPAA regulations along with the International Building Code, Kentucky Building Code, and Life Safety Code requirements. The Owner converted existing facility exam rooms into individual staff offices. The existing men's and women's restrooms were converted to employee restrooms and the former lobby now houses a staff break area. Completed in 2008, the construction cost for this project was \$676,000.

Physicians Mall Entrance Canopy & Interior Finish Renovation Lexington, KY

GRW provided design and construction administration services for a new entrance canopy, as well as interior finishes renovation, for the Physicians Mall located in Lexington, KY.

The entrance canopies entailed construction of two 350-SF cantilevered canopies and landscaping to the south and west of the existing facility including: concrete walks, grass areas, planter areas, trees, shrubs, benches, cast in place concrete canopy columns, tube steel cantilevered canopy structure, exposed wood roof decking, standing seam metal roof panels, and accent lighting. The interior renovation of the building, occupied during construction, consisted of new finishes for 5,000 SF of corridor space. Work included preparation of the existing exposed aggregate floor for a new resinous floor finish system, preparation of existing wall sheathing and running trim for a new paint finish, preparation of the above ceiling space for above ceiling paint finish including all existing fire suppression lines, removal of existing wall mounted cove lighting, removal and re-installation of existing signage, new open cell grid ceiling system, suspended ceiling accent panels, suspended gypsum board ceiling clouds, and decorative light fixtures.

Design Completion: 12/31/2011
Construction Completion: 12/31/2012
Final Construction Cost: \$394,582
CLIENT CONTACT: Dr. George Privett,
Lexington Diagnostic Center, (859) 278-7226
gwprivett@aol.com



PROJECT EXAMPLE



FRANKLIN COUNTY HEALTH DEPARTMENT

FRANKLIN COUNTY HEALTH DEPARTMENT, FRANKFORT, KY

Calhoun Construction Services served as the General Contractor for the renovation of the entire health center. Included in this renovation were the demolition of existing walls, installing new layout, new lights, new HVAC, adding a new canopy and installing a new roof.

KEY METRICS:



General Contractor



11,700 sqft



Renovation



Cost:
\$1.7 Million





PROJECT EXAMPLE



HUMANA - CENTERWELL

LOUISVILLE, KY, GULFPORT, MS, BILOXI, MS, JACKSON, MS

This project is an addition to the rapidly-growing west end of Louisville Urban League's property that includes that Norton Healthcare Sports & Learning Center and Goodwill's Opportunity Campus.

Centerwell's Senior Primary Care Center will provide accredited, award-winning services to offer seniors, families, and providers the ability to tailor care as life changes. A subsidiary of Humana, CenterWell's growth mirrors a solid commitment to redesign senior care. With a footprint across 40 states, CenterWell is now one of the largest providers of health care in the country.

Calhoun is completing four of these regional facilities, located in Louisville, KY, Gulfport, MS, Biloxi, MS, and Jackson, MS.



KEY METRICS:



GC & CM



6,000-7,500
sqft



New
Construction



Self-Perform



Cost:
\$1.5 - 2.2M



PROJECT EXAMPLE



NORTON ST. MATTHEWS MEDICAL PLAZA I

NORTON HEALTHCARE, LOUISVILLE, KY

Calhoun Construction served as the General Contractor for the renovation of this medical complex consisting of exterior and interior updates. The renovation was broken into three phases: exterior upgrades, interior finish upgrades, and interior mechanical upgrades.

For the exterior upgrades, the renovation included replacement of the existing glass with new thermally broken storefront and double-pane glass. The exterior was entirely reclad in drainable EIFS to better match the campus. All new landscaping accented the building's new expanded drop-off canopy to better serve patients.



KEY METRICS:



General Contractor



95,000 sqft



Renovation



Self-Performed



Cost:
\$9 Million



PROJECT EXAMPLE



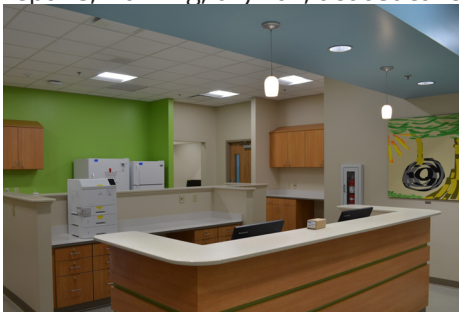
NORTON PEDIATRICS PHASE I, II & III

NORTON HEALTHCARE, SHELBYVILLE, KY

This project gave Norton Children's Hospital Medical Associates practice room to grow and also enhanced access to other services provided by the hospital.

Potential services available in the facility include education, prevention and early intervention for children suffering from chronic illness as well as advocacy and community education centered around childhood obesity management, diabetes management and childhood safety.

Calhoun Construction Services was proud to serve as the General Contractor for this state of the art facility. Calhoun Construction self performed concrete repairs, framing, drywall, acoustical ceiling and painting.



KEY METRICS:



General Contractor



30,000 sqft



Tenant Fit-Out



Self-Performed



PROJECT EXAMPLE



UOFL HEALTH - FRAZIER REHAB THIRD FLOOR

UNIVERSITY OF LOUISVILLE, LOUISVILLE, KY

Known for world-class care in comprehensive acute rehab, UofL Health – Frazier Rehab Institute (formerly KentuckyOne Health – Frazier Rehab Institute) provides extensive therapy across a number of specialties for inpatient and outpatient rehab needs.

Calhoun served as general contractor on this renovation and framed new walls, hung drywall, patched any imperfections on existing drywall. All walls on the entire floor were newly painted and we installed grab bars, mirrors, soap and hand sanitizers, glove holders, and sanitizer wipes holder.



KEY METRICS:



General Contractor



2,500 sqft



Renovation



Self-Performed



Cost:
\$200,000



PROJECT EXAMPLE



HOSPITAL PHARMACY UPGRADES

NORTON HEALTHCARE, UofL HEALTH, MULTIPLE LOCATIONS IN LOUISVILLE, KY
Calhoun served as the construction manager on several renovation projects of the existing hospital pharmacies' compounding clean room.

The renovations were necessary to comply with the new USP 797/800 standards. Some locations received new robot compounding equipment.

All work was self-performed.



KEY METRICS:



Construction Manager



Range
300-10,000 sqft



Renovation



Self-Performed



Cost:
\$Varies



PROJECT EXAMPLE

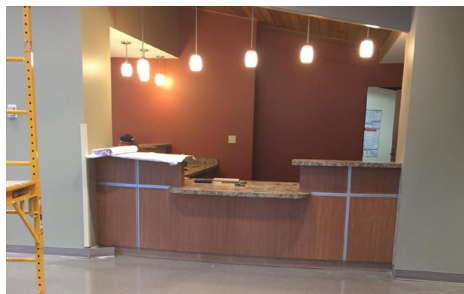


OAKWOOD SPECIALTY CLINIC

SOMERSET, KY

Calhoun Construction served as the General Contractor for the Oakwood Specialty Clinic. The Oakwood Specialty Clinic is a state-of-the-art facility that provides the highest quality medical, dental, psychiatric and therapy care to individuals with intellectual and development disabilities.

The project consisted of new construction and renovation; the new construction including general construction, mechanical, plumbing and electrical work. The work entailed an addition of approximately 7,500 square feet and renovation of approximately 960 square feet of the existing building. The addition is a single story, steel frame with metal stud walls and brick veneer, a shingle roof over nailboard composite insulation and metal roof deck .



KEY METRICS:



General Contractor



7,500 sq ft



Renovation



Cost:
\$2,075,000

SELF-PERFORM WORK

Calhoun Construction has the ability to self-perform numerous trades. We use the highest quality materials and our teams are comprised of industry-tested craftsmen. This allows us to bring the best benefit to our clients to ensure their projects stay on track and within the construction budget.

We look forward to being your trusted resource for all construction projects. Below is a list of scope items that Calhoun employees regularly perform on our projects.

- Demolition
- Excavation
- Concrete Construction
- Concrete Repair
- Miscellaneous Steel
- Metal Framing
- Carpentry
- Drywall
- Painting
- Interior Finishes
- Acoustic Ceilings
- Facade Repairs
- Equipment Installation



ACORD™

CERTIFICATE OF LIABILITY INSURANCE

DATE (MM/DD/YYYY)

7/26/2024

THIS CERTIFICATE IS ISSUED AS A MATTER OF INFORMATION ONLY AND CONFERS NO RIGHTS UPON THE CERTIFICATE HOLDER. THIS CERTIFICATE DOES NOT AFFIRMATIVELY OR NEGATIVELY AMEND, EXTEND OR ALTER THE COVERAGE AFFORDED BY THE POLICIES BELOW. THIS CERTIFICATE OF INSURANCE DOES NOT CONSTITUTE A CONTRACT BETWEEN THE ISSUING INSURER(S), AUTHORIZED REPRESENTATIVE OR PRODUCER, AND THE CERTIFICATE HOLDER.

IMPORTANT: If the certificate holder is an ADDITIONAL INSURED, the policy(ies) must have ADDITIONAL INSURED provisions or be endorsed. If SUBROGATION IS WAIVED, subject to the terms and conditions of the policy, certain policies may require an endorsement. A statement on this certificate does not confer any rights to the certificate holder in lieu of such endorsement(s).


PRODUCER USI Insurance Services LLC-CL 435 N. Whittington Parkway Ste 250 Louisville, KY 40222		CONTACT NAME: Commercial Lines PHONE (A/C, No, Ext): 502.815.5200 FAX (A/C, No): 855.209.1246 E-MAIL ADDRESS:	
		INSURER(S) AFFORDING COVERAGE	
		INSURER A : Phoenix Insurance Company	
		INSURER B : Travelers Property Cas. Co. of America	
		INSURER C : Travelers Indemnity Company	
		INSURER D : Indian Harbor Insurance Company	
		INSURER E :	
		INSURER F :	

COVERAGES **CERTIFICATE NUMBER:** **REVISION NUMBER:**

THIS IS TO CERTIFY THAT THE POLICIES OF INSURANCE LISTED BELOW HAVE BEEN ISSUED TO THE INSURED NAMED ABOVE FOR THE POLICY PERIOD INDICATED. NOTWITHSTANDING ANY REQUIREMENT, TERM OR CONDITION OF ANY CONTRACT OR OTHER DOCUMENT WITH RESPECT TO WHICH THIS CERTIFICATE MAY BE ISSUED OR MAY PERTAIN, THE INSURANCE AFFORDED BY THE POLICIES DESCRIBED HEREIN IS SUBJECT TO ALL THE TERMS, EXCLUSIONS AND CONDITIONS OF SUCH POLICIES. LIMITS SHOWN MAY HAVE BEEN REDUCED BY PAID CLAIMS.

INSR LTR	TYPE OF INSURANCE	ADDL INSR	SUBR WVD	POLICY NUMBER	POLICY EFF (MM/DD/YYYY)	POLICY EXP (MM/DD/YYYY)	LIMITS
A	<input checked="" type="checkbox"/> COMMERCIAL GENERAL LIABILITY <input type="checkbox"/> CLAIMS-MADE <input checked="" type="checkbox"/> OCCUR <input checked="" type="checkbox"/> PD Ded: \$5,000 <input checked="" type="checkbox"/> Exp, Collapse, Undgr GEN'L AGGREGATE LIMIT APPLIES PER: <input type="checkbox"/> POLICY <input checked="" type="checkbox"/> PROJECT <input checked="" type="checkbox"/> LOC OTHER:	X	X	DTCO4Y935104PHX24	08/01/2024	08/01/2025	EACH OCCURRENCE \$ 2,000,000 DAMAGE TO RENTED PREMISES (Ea occurrence) \$ 300,000 MED EXP (Any one person) \$ 5,000 PERSONAL & ADV INJURY \$ 2,000,000 GENERAL AGGREGATE \$ 4,000,000 PRODUCTS - COMP/OP AGG \$ 4,000,000 \$
A	AUTOMOBILE LIABILITY <input checked="" type="checkbox"/> ANY AUTO <input type="checkbox"/> OWNED AUTOS ONLY <input type="checkbox"/> HIRED AUTOS ONLY <input checked="" type="checkbox"/> Deductibles	X	X	8104Y9366962426G	08/01/2024	08/01/2025	COMBINED SINGLE LIMIT (Ea accident) \$ 2,000,000 BODILY INJURY (Per person) \$ BODILY INJURY (Per accident) \$ PROPERTY DAMAGE (Per accident) \$ Comp/Coll \$ \$1000/\$1000
B	<input checked="" type="checkbox"/> UMBRELLA LIAB <input type="checkbox"/> EXCESS LIAB DED <input checked="" type="checkbox"/> RETENTION \$ 10,000	X	X	CUP5Y1880122426	08/01/2024	08/01/2025	EACH OCCURRENCE \$ 15,000,000 AGGREGATE \$ 15,000,000 \$
C	WORKERS COMPENSATION AND EMPLOYERS' LIABILITY ANY PROPRIETOR/PARTNER/EXECUTIVE OFFICER/MEMBER EXCLUDED? <input checked="" type="checkbox"/> Y <input checked="" type="checkbox"/> N (Mandatory in NH) If yes, describe under DESCRIPTION OF OPERATIONS below		N/A	UB4Y9993082426G	08/01/2024	08/01/2025	<input checked="" type="checkbox"/> PER STATUTE <input type="checkbox"/> OTH-ER E.L. EACH ACCIDENT \$ 1,000,000 E.L. DISEASE - EA EMPLOYEE \$ 1,000,000 E.L. DISEASE - POLICY LIMIT \$ 1,000,000
B	Leased/Rented Eqp			QT6303N264025TIL24	08/01/2024	08/01/2025	\$1M Lmt/\$5,000 Ded
D	Prof & Poll Liab			CEO742131803	08/01/2024	08/01/2025	\$5M Agg Lmt/\$100K Ded

DESCRIPTION OF OPERATIONS / LOCATIONS / VEHICLES (ACORD 101, Additional Remarks Schedule, may be attached if more space is required)

CERTIFICATE HOLDER PROOF OF INSURANCE Calhoun Construction Services, Inc.		CANCELLATION SHOULD ANY OF THE ABOVE DESCRIBED POLICIES BE CANCELLED BEFORE THE EXPIRATION DATE THEREOF, NOTICE WILL BE DELIVERED IN ACCORDANCE WITH THE POLICY PROVISIONS. AUTHORIZED REPRESENTATIVE 	
--	--	--	--



Travelers
Bond & Financial Products
Construction Services
303 N. Hurstbourne Parkway, Suite 150
Louisville, KY 40222
Phone: (502)429-7339
www.travelersagents.com

April 24, 2025

RE: CALHOUN CONSTRUCTION SERVICES, INC., LOUISVILLE, KY

To Whom It May Concern:

We understand that Calhoun Construction Services, Inc.. is being considered for a project. Please be advised that Travelers Casualty and Surety Company of America/Travelers Casualty and Surety Company (herein after referred to as "Travelers") have handled all of the bonding requirements for Calhoun Construction Services, Inc. since 2012. We have confidence in the financial and operations strength of the firm, and are a strong supporter of their total work program. Calhoun Construction Services, Inc. has a surety program with Travelers for single projects up to \$200,000,000, an aggregate of \$500,000,000, and with an available bonding limit of \$350,000,000. Travelers will greatly entertain requests exceeding these parameters. We are pleased that Calhoun Construction Services, Inc. is pursuing a project and we recommend them to you as one of the outstanding contractors in the country.

Calhoun Construction Services, Inc. has the ability to provide Performance and Payment Bonds for your project, should they be selected. Naturally, as is customary within the surety industry, the issuance of any bid or final bonds is always contingent upon a satisfactory underwriting review at the time a request for bonds is made. This review may include, but not be limited to, acceptable terms, conditions, documents, bond forms, and confirmation of an acceptable financing source and payment provisions. It should be understood that any arrangement for surety bonds is a matter strictly between Calhoun Construction Services, Inc. and Travelers. We assume no liability to third parties or to you by issuance of this letter.

Travelers Casualty and Surety Company of America/Travelers Casualty and Surety Company, members of the Travelers Group, are rated as A++ (Superior) with a Financial Classification of XV by A.M. Best Company, appears on the U.S. Treasury Department List of approved sureties and is licensed to conduct business in all fifty states.

Should you require any additional information regarding our relationship with Calhoun Construction Services, Inc., please contact us at the Louisville, KY address listed below.

Sincerely,

Thomas J. Mitchell, Area Vice President
Senior Director Construction Practice
Arthur J. Gallagher Risk Management Services, LLC
1601 Alliant Avenue
Louisville, KY 40299-6338 (502)415-7000



REFERENCES

Humana Centerwell

Architect: Moody Nolan
Steve Smith, ssmith@moodynolan.com
Owner: Humana
Cam Black, Cushman & Wakefield
cblack11@humana.com

Norton St. Matthews Medical Plaza I

Architect: Gresham Smith
Owner: Norton Healthcare
NTS Development, Matt Ricketts, Owner's Rep
502-426-4800

Norton Pediatrics Phase I, II & III

Architect: Studio Kremer Architects
Owner: Norton Healthcare, Christy McElfresh 502-852-8185

UofL Health Frazier Rehab

Architect: Studio 4 Design Solutions
Owner: UofL Health, Kelly Nelson, 502-639-0486

UofL Health and Norton Healthcare Multiple Pharmacies

Architect: Varied
Owner: Uof L Health and Norton Healthcare
Norton Healthcare, Christy McElfresh 502-852-8185
UofL Health, Kelly Nelson, 502-639-0486

PROJECT SCHEDULE

Montgomery County Health Department
New Facility
Proposal Schedule - 04/29/25



Customer Logo

ID	Task Name	Start	Finish																
				Apr	Qtr 2, 2025	Jun	Jul	Qtr 3, 2025	Sep	Oct	Qtr 4, 2025	Dec	2026	Jan	Qtr 1, 2026	Mar	Apr	Qtr 2, 2026	Jun
1	Design and Pricing	Tue 5/27/25	Thu 12/18/26																
2	Pre-Construction and Design Development	Tue 5/27/25	Thu 12/18/25																
3	Project Award	Tue 5/27/25	Tue 5/27/25																
4	Design Development meeting with owners	Wed 5/28/25	Tue 6/10/25																
5	Final geotech Performed	Wed 6/25/25	Thu 6/26/25																
6	Schematic design started	Wed 6/11/25	Tue 7/22/25																
7	Final Geotech Report	Wed 6/11/25	Tue 9/23/25																
8	Site and Foundations 60% drawings for pricing and review	Wed 7/23/25	Tue 9/2/25																
9	Architectural and MEP 60% Design drawings for pricing and review	Wed 7/23/25	Tue 9/23/25																
10	Site and Foundation permit drawings	Wed 9/3/25	Tue 10/14/25																
11	Site and Foundation permit submission	Wed 10/15/25	Tue 11/11/25																
12	Architectural and MEP Permit Drawings	Wed 9/24/25	Wed 9/24/25																
13	100% CD drawings	Thu 9/25/25	Thu 9/25/25																
14	Full Building Permit Submission and Review	Fn 9/26/25	Thu 12/18/25																
15	Buyout	Wed 9/3/25	Mon 5/18/26																
16	Bid Packages	Wed 9/3/25	Mon 10/27/25																
17	Site and Foundations	Wed 9/3/25	Tue 9/16/25																
18	Site and Foundations Pricing Review	Wed 9/17/25	Fn 9/19/25																
19	Site and Foundation Recommendation and Release	Mon 9/22/25	Tue 9/23/25																
20	Masonry and Structural Steel	Wed 9/3/25	Tue 9/16/25																
21	Masonry and Structural Steel Pricing Review	Wed 9/17/25	Fn 9/19/25																
22	Masonry and Structural Steel Recommendation and Release	Mon 9/22/25	Tue 9/23/25																
23	MEP Trades	Wed 9/24/25	Tue 10/14/25																
24	MEP Pricing Review	Wed 10/15/25	Fn 10/17/25																
25	MEP Recommendation and Release	Mon 10/20/25	Tue 10/21/25																
26	Architectural and General Trades Package	Wed 9/24/25	Mon 10/13/25																
27	Architectural and General Trades Pricing Review	Tue 10/14/25	Mon 10/20/25																
28	Architectural and General Trades Recommendation and Release	Tue 10/21/25	Mon 10/27/25																
29	Critical Path Procurement	Wed 9/24/25	Mon 5/18/26																
30	Electrical Gear	Wed 10/22/25	Tue 3/24/26																
31	Glazing and Storefront	Tue 10/28/25	Mon 5/18/26																
32	Structural Steel	Wed 9/24/25	Tue 11/25/25																
33	HVAC Units	Wed 10/22/25	Tue 4/14/26																
34	Door Frames	Tue 10/28/25	Mon 1/5/26																
35	Construction	Wed 10/1/25	Tue 9/8/26																
36	Site Work and Underground Utilities	Wed 10/1/25	Tue 12/30/25																
37	Strip Topsoil	Wed 10/1/25	Tue 10/7/25																
38	Construct Building Pad	Wed 10/8/25	Tue 10/21/25																
39	Rock Building Pad	Wed 10/22/25	Tue 10/28/25																
40	Install Underground MEP Utilities	Wed 10/22/25	Tue 12/2/25																
41	Install Storm Drainage	Wed 12/3/25	Tue 12/30/25																
42	Structural Concrete Work	Wed 10/22/25	Tue 1/13/26																
43	Strip Footings	Wed 10/22/25	Tue 11/18/25																
44	Concrete Walls	Wed 11/19/25	Tue 12/9/25																
45	Spread Footings	Wed 12/10/25	Tue 12/23/25																
46	Interior MEP Underground	Wed 11/19/25	Tue 12/23/25																
47	Slab on Grade	Wed 12/24/25	Tue 1/13/26																
48	Structure/Enclosure	Wed 1/14/26	Tue 5/12/26																
49	Erect Steel	Wed 1/14/26	Tue 2/24/26																
50	Decking Installation	Wed 2/25/26	Tue 3/3/26																
51	Exterior Wall Framing	Wed 3/4/26	Tue 3/24/26																
52	Exterior Dense Glass wrap	Wed 3/25/26	Tue 3/31/26																
53	Masonry Installation	Wed 4/1/26	Tue 4/28/26																
54	Roof Installation	Wed 3/4/26	Tue 3/24/26																
55	Dryvit Install	Wed 3/25/26	Tue 4/21/26																
56	Storefront and Exterior Glass install	Wed 4/22/26	Tue 5/12/26																
57	Interior Build Out	Wed 3/25/26	Wed 8/19/26																
58	Overhead MEP Rough In	Wed 3/25/26	Tue 4/14/26																
59	Interior Wall Framing	Wed 3/25/26	Tue 4/28/26																
60	Interior Wall MEP Rough In	Wed 4/15/26	Tue 5/5/26																
61	Rough In Inspections	Wed 5/6/26	Wed 5/6/26																
62	Interior Drywall and Finishes	Thu 5/7/26	Wed 7/29/26																
63	MEP finish cover installations	Thu 7/30/26	Wed 8/12/26																
64	Final cleaning	Thu 8/13/26	Wed 8/19/26																
65	Exterior Constuction	Wed 5/13/26	Tue 9/8/26																
66	Concrete Sidewalks	Wed 5/13/26	Tue 6/2/26																
67	Concrete Paving	Wed 6/3/26	Tue 6/16/26																
68	Curb and Gutter install	Wed 6/17/26	Tue 6/23/26																
69	Aspahlt Paving Install	Wed 6/24/26	Tue 7/7/26																
70	Backfilling of Curbs	Wed 7/8/26	Tue 7/21/26																
71	Fine Grading	Wed 7/22/26	Tue 8/11/26																
72	Landscaping	Wed 8/12/26	Tue 9/1/26																
73	Sod Installation	Wed 9/2/26	Tue 9/8/26																
74	Project Completion	Wed 9/9/26	Mon 11/2/26																

PROJECT SCHEDULE

Montgomery County Health Department
New Facility
Proposal Schedule - 04/29/25



Customer Logo

ID	Task Name	Start	Finish													2026												
				Apr	Qtr 2, 2025		Jun	Jul	Qtr 3, 2025		Sep	Oct	Qtr 4, 2025		Dec	Jan	Qtr 1, 2026		Mar	Apr	Qtr 2, 2026		Jun	Jul	Qtr 3, 2026		Sep	Oct
75	Final Inspections	Wed 9/9/26	Wed 9/9/26																									Final Inspections
76	Substantial Completion	Thu 9/10/26	Thu 9/10/26																									Substantial Completion
77	Design Team and Owner Walk	Fri 9/11/26	Mon 9/14/26																									Design Team and Own
78	Punch List	Tue 9/15/26	Fri 10/30/26																									
79	Final Completion	Mon 11/2/26	Mon 11/2/26																									



THANK YOU FOR YOUR CONSIDERATION



“Having the chance to work very closely with several different project teams has been great. They were easy to work with, knowledgeable, and had a phenomenal teamwork attitude.”

~ NTS Development



“I am sure you already know, but wanted to pass along what a first class team you have from management to labor. Our new space at the Shelby Campus turned out beautiful. Without the hard work, coordination, and collaboration from your team, this project would not have been possible.”

~ Lisa Nalley
Chief of Staff & Strategic Projects



“...Calhoun has exceeded our goal for minority business contractor participation...They were proactive in their efforts to communicate our bid opportunities to businesses that had become leery to construction inclusion programs on large projects. If changing their bid approach or system would engage more firms, they'd change it; if their project managers need to meet with small businesses, they'd meet; and if hands had to be held through the process, no problem! I am very happy with the hands on, all hands on deck approach of Calhoun and trust their commitment to our owner's goals.”

~ Eric Browne
CEO & Principal, Browne Engineering

“...I have had the privilege of working with Calhoun on several construction projects over the past few years with each experience ending with meeting or exceeding MWBE/ Veteran participation goals...”

Calhoun has made my job easier and I look forward to future opportunities to work with them and I highly recommend their services.”

~ Anthony Mathis
Norton Healthcare Director of MWBE/ Veteran Initiatives



“The Conservatory Project came well inline to original construction estimates and projection completion was right on time, which was amazing given the headwinds provided by the COVID-19 pandemic.
Calhoun not only did an exceptional job in budgeting, construction management, project oversight, communication, creative problem solving and cost management, Calhoun truly was our savior.”

~ Scott T. Shoenberger
President & CEO, The Al J. Schneider Company



“...I wanted to just let you know that the Trackside team was nothing short of exceptional...”

I realize a lot was thrown at us and the last month or so of the project didn't go exactly as planned, but we (your guys) got what should've been a 12-month build up in 9 months.”

~ Michael J. Powell
R2Architects, LLC