

GENERAL QUALIFICATIONS & SERVICES

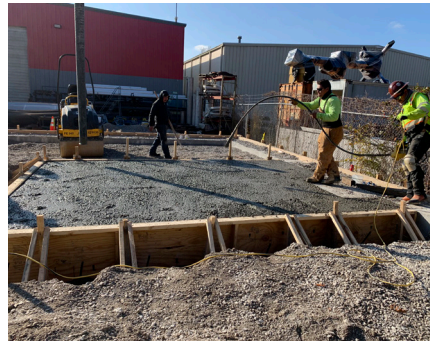
Self-Perform Work • Design-Build • Construction Management
General Contracting • Trade Contracting • Facility Maintenance

Hospitality



Healthcare

Industrial



Higher Education

7707 National Turnpike • Louisville, KY • 40214
1708 Jaggie Fox Way • Lexington, KY • 40511
www.calhounconstructs.com

COMPANY HISTORY

Calhoun Construction was founded in July 2012, and is structured as an S corporation. Currently, we have nine (9) equity shareholders and a total of 120 employees. Our dedicated Calhoun project leadership team has over 65 years and \$5 billion of combined construction experience. Many of our professionals have traveled the country with large nationwide construction managers building projects in excess of \$300 million.

Calhoun Construction Services is a Louisville-based general contractor and construction management firm focused on providing complete construction services while placing an emphasis on valuable relationships. Calhoun provides the vast resources of a well-established, major construction entity with the knowledge and expertise of local leadership.



\$500
MILLION
Bonding Capacity



\$200
MILLION
Annual Volume



.69
Safety EMR



2012
Year Established



140
Full Time
Employees



ZERO
Recordable
Incidents in 2022

SELF-PERFORM WORK

Calhoun Construction has the ability to self-perform numerous trades. We use the highest quality materials and our teams are comprised of industry-tested craftsmen. This allows us to bring the best benefit to our clients to ensure their projects stay on track while maximizing the construction budget. We are pleased to support any capital or maintenance-related projects.

We look forward to being your trusted resource for all construction projects. Below is a list of scope items that Calhoun employees regularly perform on our projects.

- Demolition
- Excavation
- Concrete Construction
- Concrete Repair
- Miscellaneous Steel
- Metal Framing
- Carpentry
- Drywall
- Painting
- Interior Finishes
- Acoustic Ceilings
- Facade Repairs
- Equipment Installation



To see more self-perform projects, visit us online at
www.calhounconstructs.com/selfperform

GENERAL CONTRACTING WORK

Calhoun Construction is a leading general contractor for the central Kentucky and southern Indiana region. We have the team to make any facility addition, office expansion, or new construction project possible from concept phase through turnover.

We create collaborative environments, lead value-driven discussions, and facilitate upfront decision-making to shape optimal project outcomes. We partner with you to understand your project vision and then apply our expertise to fulfill that vision. We have both commercial and industrial construction experience that is beneficial for any office, process, or facility-improvement projects. Our company has a tremendous amount of project experience building and renovating landmark properties such as yours, and we would love to be considered for future projects.

Churchill Downs (Multiple Projects)



Location: Louisville, KY
Project sq ft: Varies

Blaze Pizza



Location: Multiple
Project sq ft: Varies

DQ Grill & Chill



Location: Louisville, KY
Project sq ft: 3,208

Jimmy John's



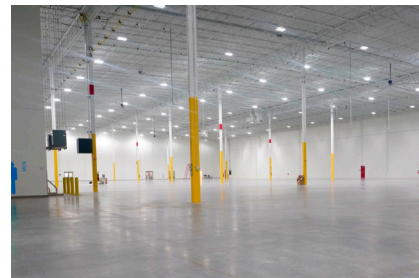
Location: Louisville, KY
Project sq ft: 1,100

Norton Healthcare Sports & Learning Complex



Location: Louisville, KY
Project sq ft: 195,000

Amazon Distribution Warehouse



Location: Louisville, KY
Project sq ft: 140,000

PROJECT EXPERIENCE: Construction Management

Churchill Downs



Location: Louisville, KY

Continuous on-site work starting in 2013 - current with over 40 projects and over \$500 million.

Derby City Gaming



Location: Louisville, KY
Project sq ft: 85,000

Goodwill Opportunity Campus



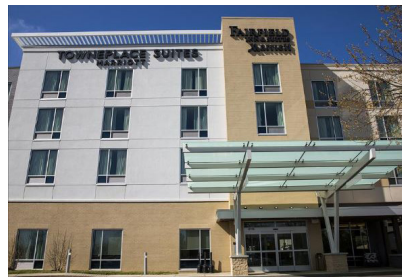
Location: Louisville, KY
Project sq ft: 124,000

Homewood Suites



Location: Louisville, KY
Project sq ft: 97,000

Towneplace Suites + Fairfield Inn & Suites



Location: Louisville, KY
Project sq ft: 80,000

Jewish Community Center



Location: Louisville, KY
Project sq ft: 108,000

Norton Sports Health Athletic & Learning Complex



Location: Louisville, KY
Project sq ft: 116,231

Amazon



Location: Louisville, Ky
Project sq ft: 150,000

8th Street Pizza



Location: Louisville, KY
Project sq ft: 1,800

PROJECT EXPERIENCE: General Contractor

Independence Bank



Location: Kentucky
Project sq ft: Varies

Upton Oxmoor Apartments



Location: Louisville, KY
Project sq ft: 310,000

Shelbyhurst Building 435



Location: Louisville, KY
Project sq ft: 120,000

TRU by Hilton



Location: Louisville, KY
Project sq ft: 43,000

Primrose



Location: Louisville, KY
Project sq ft: 12,273

Blaze Pizza



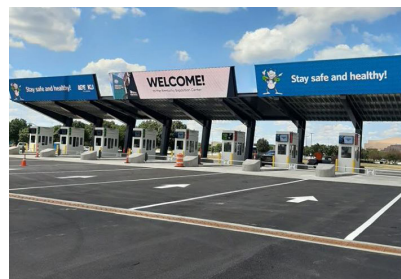
Location: Multiple
Project sq ft: Varies

Centerwell



Location: KY & MS
Project sq ft: 6,000

Kentucky Fair & Expo Gate 1



Location: Louisville, KY
Project sq ft: N/A

UofL Trager Center



Location: Louisville, KY
Project sq ft: 85,000

PROJECT EXPERIENCE: Trade Contractor

Omni



Location: Louisville, KY
Project sq ft: 925,000

Panera Bread



Location: Louisville, KY
Project sq ft: 1,500

UK the 90



Location: Lexington, KY
Project sq ft: 80,000

Red Robin



Location: Clarksville, IN
Project sq ft: 5,647

HopCat



Location: Louisville, KY
Project sq ft: 38,400

Lululemon



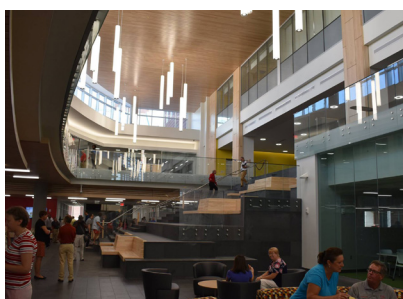
Location: Louisville, KY
Project sq ft: 3,000

Kentucky International Convention



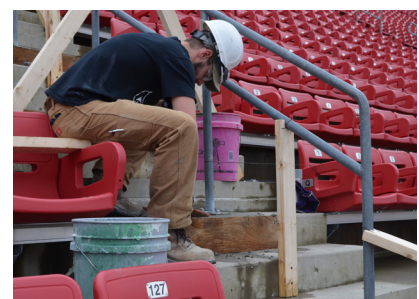
Location: Louisville, KY
Project sq ft: 960,000

University of Louisville Belknap



Location: Louisville, KY
Project sq ft: 150,000

University of Louisville Cardinal Stadium



Location: Louisville, KY
Project sq ft: N/A

PROJECT EXPERIENCE: Facility/Industrial Maintenance

JB Swift



Location: Louisville, KY

Tower International



Location: Shepherdsville, KY

Sts. Mary & Elizabeth Hospital



Location: Louisville, KY

Pilot & Flying J Truck Stops



Location: Various Locations

Walgreens



Location: Various Locations

ZeoChem



Location: Louisville, KY

Eaton



Location: Various Locations

Flaget Memorial Hospital



Location: Bardstown, KY

UofL Health



Location: Louisville, KY

CLIENT TESTIMONIALS



“Having the chance to work very closely with several different project teams has been great. They were easy to work with, knowledgeable, and had a phenomenal teamwork attitude.”

~ NTS Development



“I am sure you already know, but wanted to pass along what a first class team you have from management to labor. Our new space at the Shelby Campus turned out beautiful. Without the hard work, coordination, and collaboration from your team, this project would not have been possible.”

~ Lisa Nalley
Chief of Staff & Strategic Projects



“...Calhoun has exceeded our goal for minority business contractor participation...They were proactive in their efforts to communicate our bid opportunities to businesses that had become leery to construction inclusion programs on large projects. If changing their bid approach or system would engage more firms, they'd change it; if their project managers need to meet with small businesses, they'd meet; and if hands had to be held through the process, no problem! I am very happy with the hands on, all hands on deck approach of Calhoun and trust their commitment to our owner's goals.”

~ Eric Browne
CEO & Principal, Browne Engineering

“...I have had the privilege of working with Calhoun on several construction projects over the past few years with each experience ending with meeting or exceeding MWBE/ Veteran participation goals...”

Calhoun has made my job easier and I look forward to future opportunities to work with them and I highly recommend their services.”

~ Anthony Mathis
Norton Healthcare Director of MWBE/ Veteran Initiatives



“The Conservatory Project came well inline to original construction estimates and projection completion was right on time, which was amazing given the headwinds provided by the COVID-19 pandemic.”

Calhoun not only did an exceptional job in budgeting, construction management, project oversight, communication, creative problem solving and cost management, Calhoun truly was our savior.”

~ Scott T. Shoenberger
President & CEO, The A.J. Schneider Company



“...I wanted to just let you know that the Trackside team was nothing short of exceptional...”

I realize a lot was thrown at us and the last month or so of the project didn't go exactly as planned, but we (your guys) got what should've been a 12-month build up in 9 months.”

~ Michael J. Powell
R2Architects, LLC

CONTACT US



John Hinshaw
President



Mike Williams
Operations Manager



Kurt Meadors
VP, Estimating



Shannon Haste
Business Development

ShannonHaste@calhounconstructs.com



Stacey Kleinman
Business Development

StaceyKleinman@calhounconstructs.com

To see additional projects, please visit calhounconstructs.com/healthcare or scan the QR code below.

If you have questions or need more information, please feel free to reach out to Shannon Haste or Stacey Kleinman directly.

Thank you in advance for your consideration.

